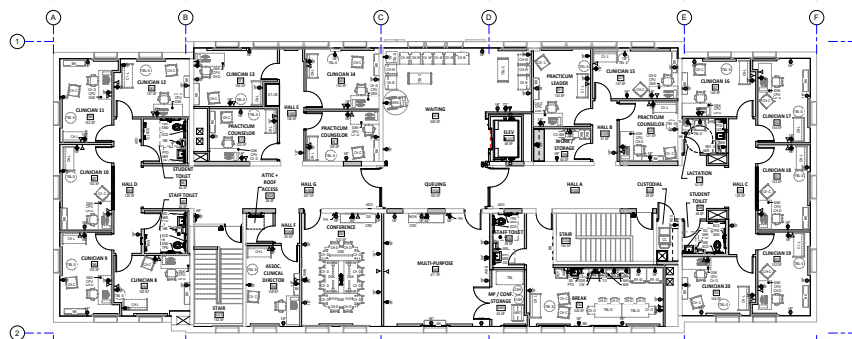
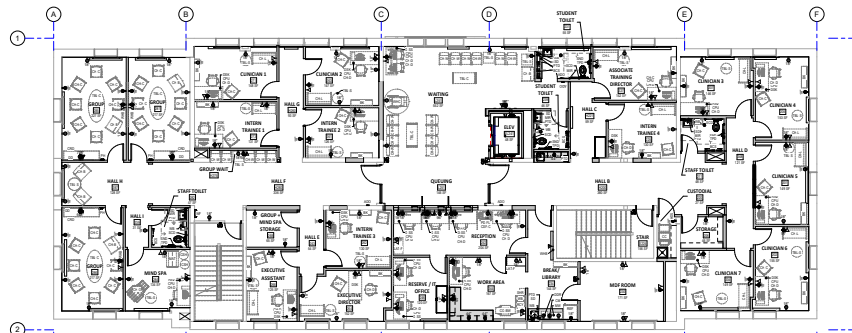
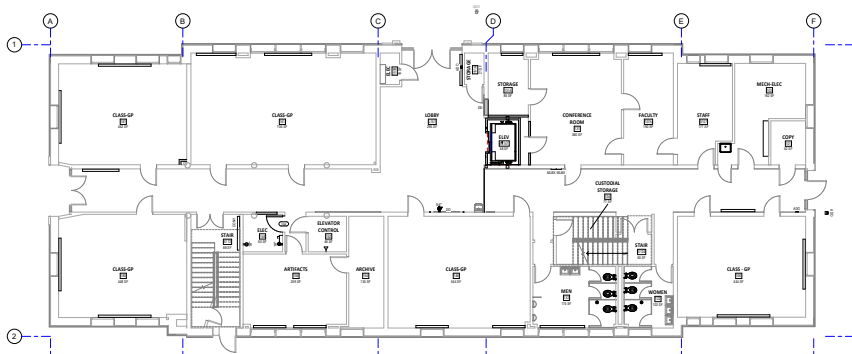




**Professional Work**





L1/L2/L3 FLOORPLANS



BUILDING EXTERIOR



INTERIOR RENDERINGS

# OSU Gilkey Hall Counseling Center | Corvallis, OR | 2021 - Current

Role: Project Manager    Cost: \$11M    Status: Pre-Construction    Size: 20,000 SF

Complete gut and remodel of L2/L3 of historic 1911 building on OSU campus for new counseling center. Light remodel on L1 with classrooms to remain and addition of new elevator from L1 to L3.

Responsibilities: Scheduling and running user meetings  
 Coordinating drawing sets (SD through CD)  
 Writing and packaging Project Manual (specs)  
 Managing all aspects of Construction Administration



L1/L3 FLOORPLANS



INTERIOR RENDERINGS

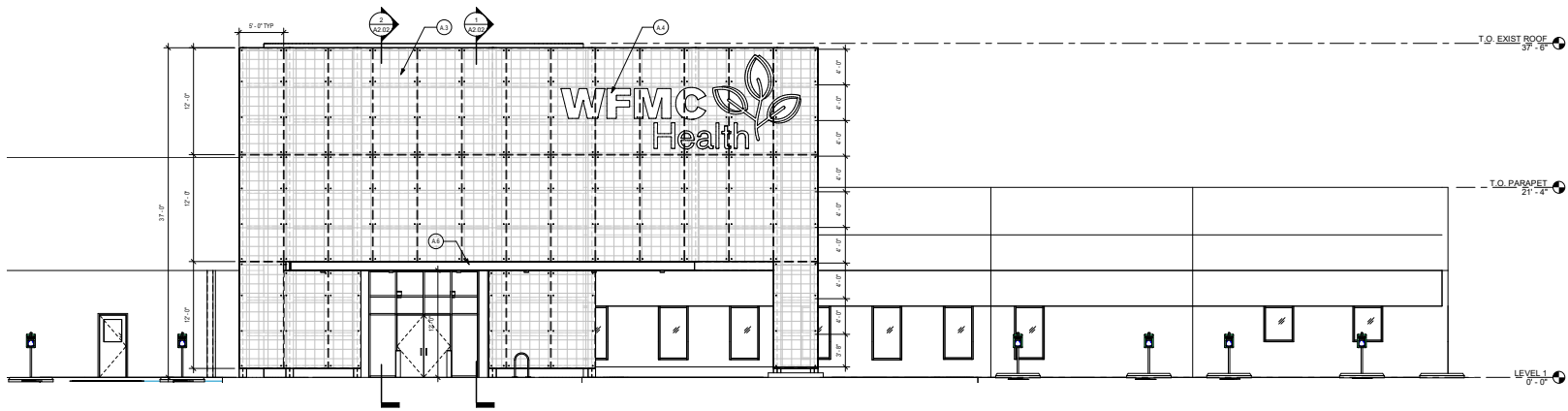
# OHSU CHO Mount Hood | Gresham, OR | 2020 - Current

Role: Project Manager    Cost: \$4.3M    Status: Pre-Construction    Size: 13,000 SF

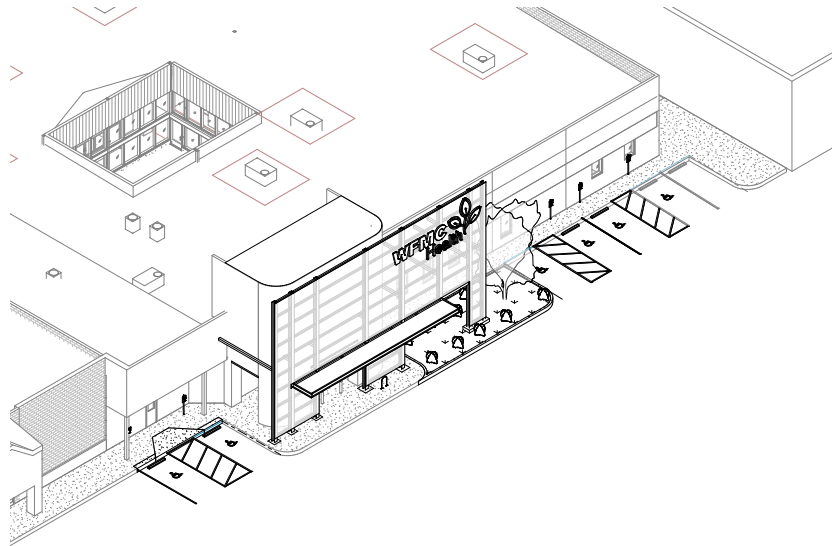
Remodel of L1 and L3 of existing medical office building for new Community Hematology and Oncology clinic with pharmacy, infusion bays, provider offices, and staff support spaces.

Responsibilities: Scheduling and running user meetings  
 Coordinating drawing sets (SD through CD)  
 Writing and packaging Project Manual (specs)  
 Managing all aspects of Construction Administration





EAST ELEVATION



SE AXON



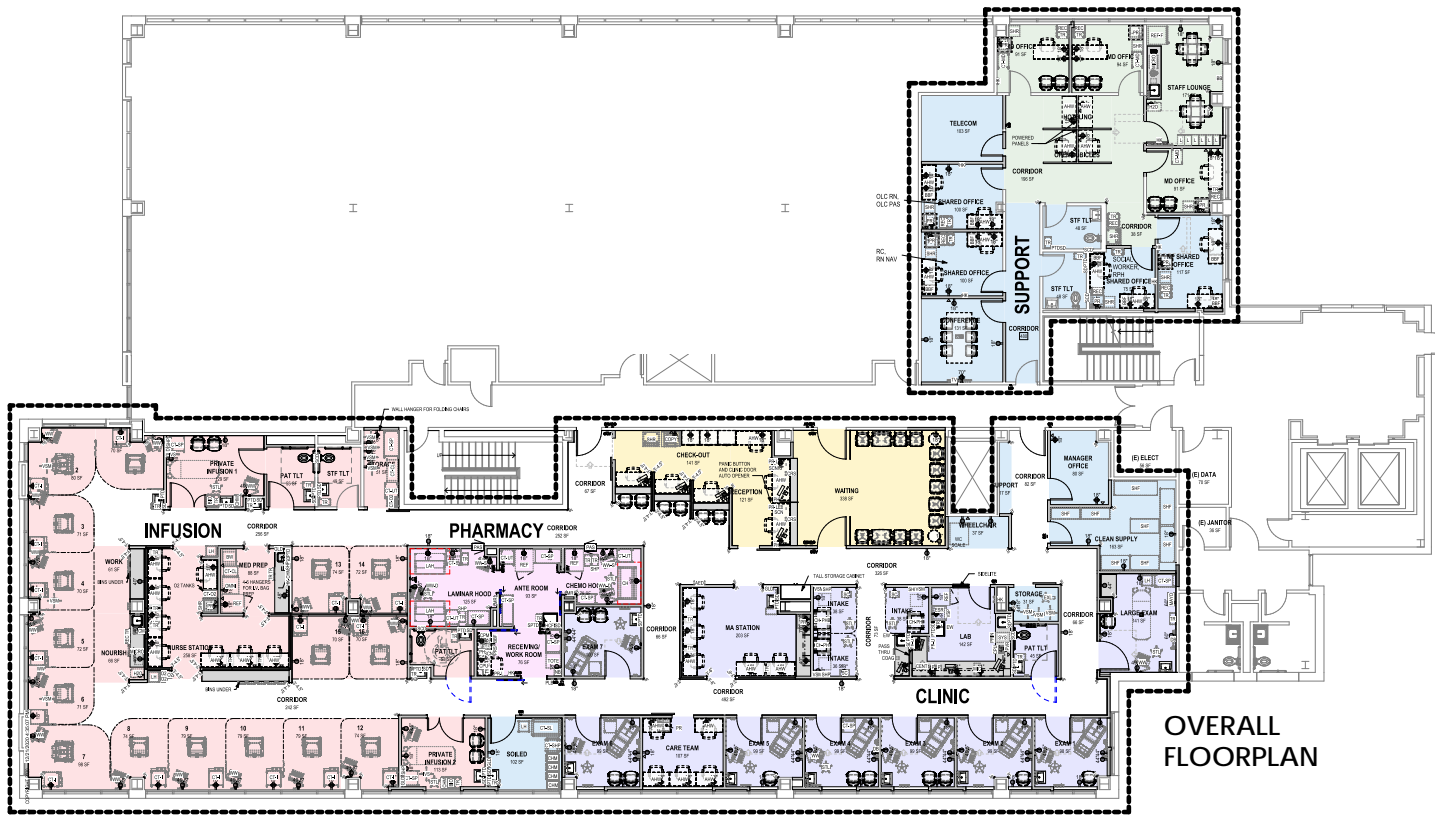
EXTERIOR RENDERING

## WFMC Entryway and Parking Lot | Salem, OR | 2019 - Current

Roles: Project Manager/Job Captain/BIM Modeler    Cost: \$205K    Status: On hold (pending owner financing)    Size: N/A

Addition of fabric billboard like signage at front entry of existing health clinic, and revised parking lot and landscaping.

Responsibilities: Managing and running user meetings  
 Creating BIM model and drawing sets (SD through CD)  
 Producing visualization and presentation packages  
 Coordinating with fabric and sign manufacturer and installer



PHASE 1 PHOTOS

# OHSU CHO Meridian Park | Tualatin, OR | 2019 - Current

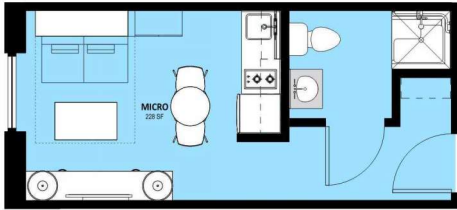
Role: Project Manager    Cost: \$3.4M    Status: Phase 2 Construction    Size: 9,000 SF

Remodel of level 4 of existing medical office building for new Community Hematology and Oncology clinic with pharmacy, infusion bays, provider offices, and staff support spaces.

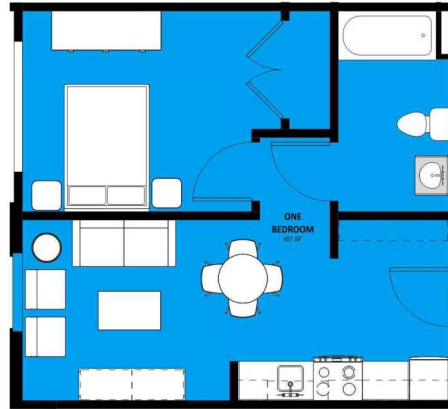
Responsibilities: Scheduling and running user meetings  
 Coordinating drawing sets (SD through CD)  
 Writing and packaging Project Manual (specs)  
 Managing all aspects of Construction Administration



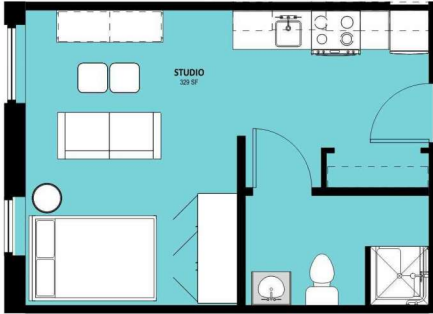
MICRO UNIT



ONE BEDROOM UNIT



STUDIO UNIT



PROPOSED UNIT PLANS



INTERIOR RENDERINGS



EXTERIOR RENDERINGS

# House of Louie | Portland, OR | 2018

Roles: BIM Modeler, Visualization

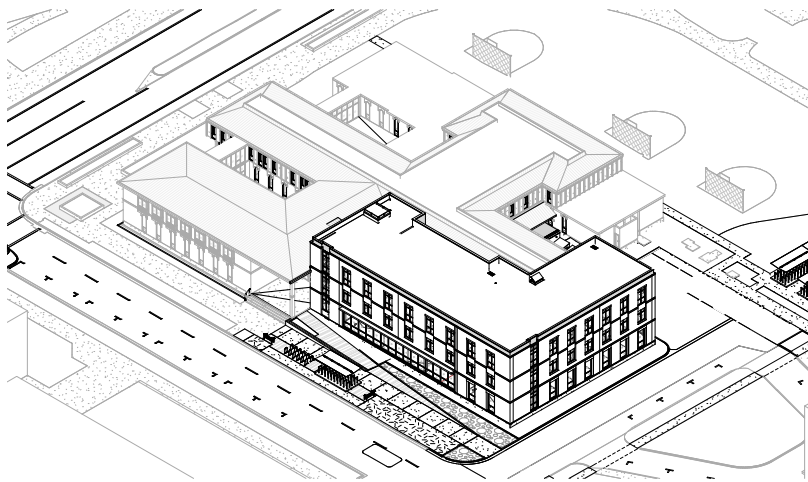
Cost: N/A

Status: Complete (Design Only)

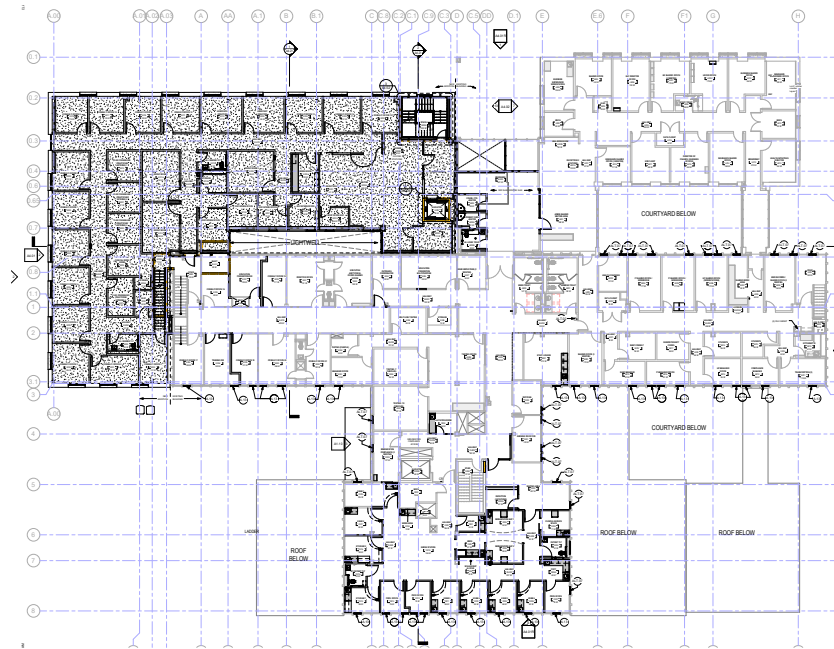
Size: N/A

Marketing proposal for Menashe group to develop 6 story Live/Work housing in Old Town district of downtown Portland.

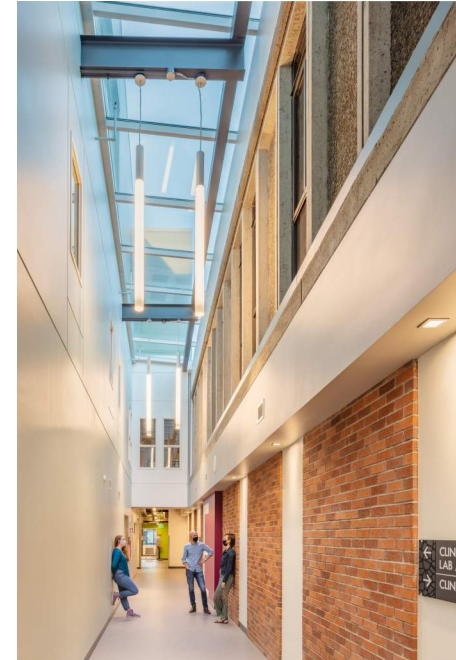
Responsibilities: Developing and modeling floor plans for different unit types  
Producing exterior and interior renderings  
Coordination final presentation package for developers



NW AXON



LEVEL 2 FLOORPLAN



## UO Counseling and Testing Center | Eugene, OR | 2017

Roles: PM, Job Captain    Cost: \$13.5M    Status: Complete    Size: 47,500 SF (Renovation), 24,000 SF (New Construction)

Renovation and expansion of existing health and counseling and testing center including three story addition, from ground up construction, connected and integrated with existing two story building. Program includes counseling, retail pharmacy, testing center, physical therapy, and dental clinic.

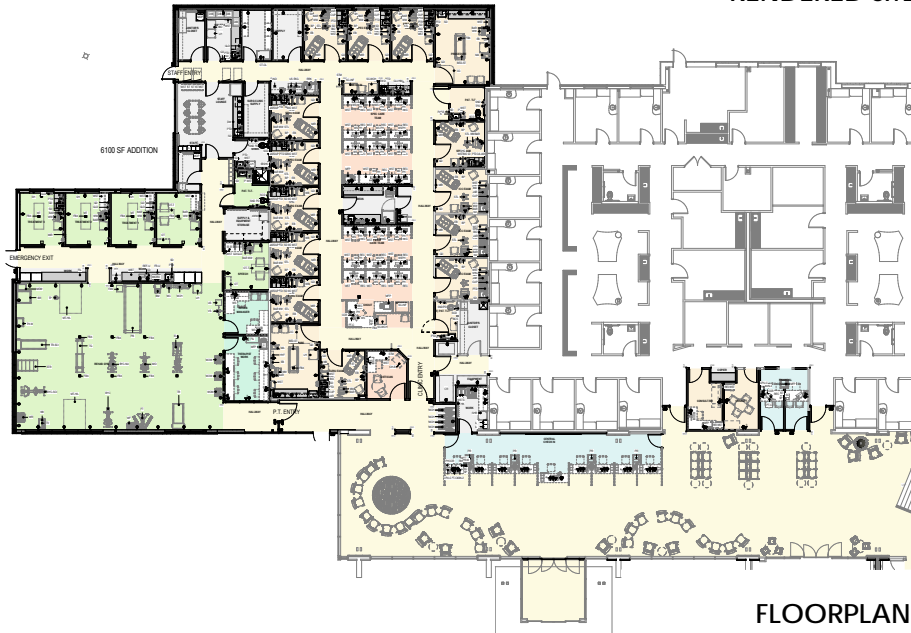
Responsibilities: Attending user group meetings and providing presentation materials  
 Creating and managing BIM model  
 Coordinating drawing sets (SD through CD)  
 Managing all aspects of Construction Administration



RENDERED SITE PLAN



BUILDING EXTERIOR



FLOORPLAN



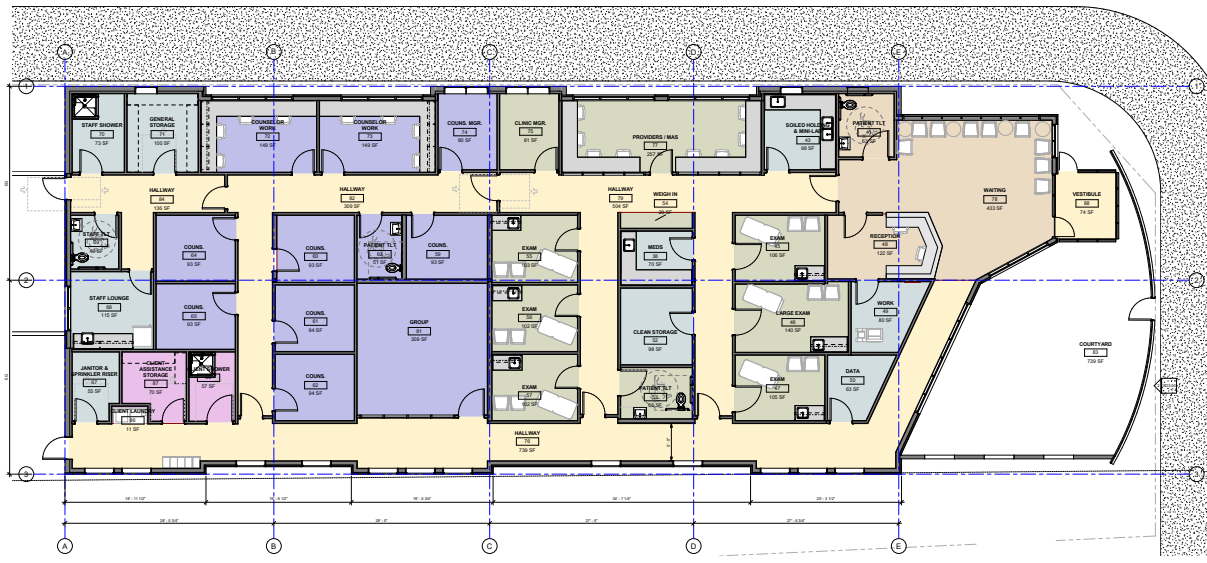
INTERIOR

# CAH Clinic and Rehab Addition | Prineville, OR | 2017

Role: BIM Modeler/Drafter, Visualization    Cost: \$3.2M    Status: Complete    Size: 16,000 SF

Remodel and addition to existing rural hospital for physical therapy, clinic, and waiting area.

- Responsibilities:
- BIM modeling and drafting
  - Organizing drawing sets
  - Assembling presentation material
  - 3D visualization and 2D renderings
  - Site meetings and punch walks



OVERALL FLOORPLAN



BUILDING EXTERIOR



EXTERIOR RENDERINGS

## Outside In East | Gresham, OR | 2016

Role: BIM Modeler, Visualization    Cost: \$2M    Status: Complete    Size: 6,400 SF

Ground up clinic and counseling center to serve as satellite for main Outside In downtown facility.

Responsibilities: BIM modeling and drafting  
 Assembling presentation material  
 3D visualization and 2D renderings  
 Architectural modeling

**AREA 1: EMPLOYEE OUTDOOR AREA**  
 - CLEAN UP OLD PLAY STRUCTURE REMNANTS  
 - NEEDS GRADING  
 - ADD BARK DUST  
 - REMOVE FENCE

**AREA 2: NORTHWEST OF BUILDING**  
 - REPLACE SIDEWALK

**AREA 5: SOUTHWEST OF SITE**  
 - IMPROVED STALL ARRANGEMENT AND MEDIAN DESIGN  
 - 76 TOTAL NEW SPACES



EXISTING DUMPSTER/ RECYCLING ENCLOSURE TO REMAIN

**AREA 4: NORTH OF SITE**  
 - IMPROVED STALL ARRANGEMENT AND MEDIAN DESIGN  
 - 21 TOTAL NEW SPACES

NOTE:  
 SEE ELEC. FOR LIGHT FIXTURE REPLACEMENT LOCATIONS.

TELECOM BOX TO REMAIN

**AREA 3: LIFELINE MOBILE CARPORT ENCLOSURE**  
 - NEW SIMPLE SHED-ROOF STRUCTURE

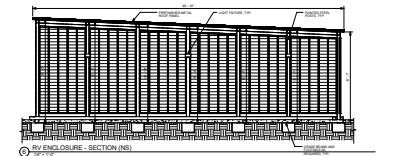
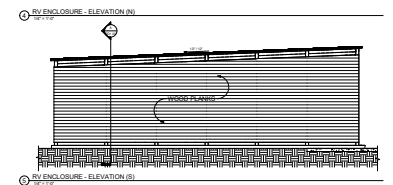
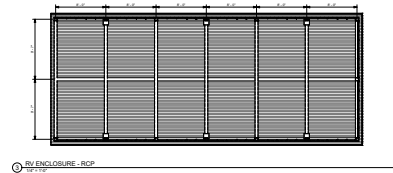
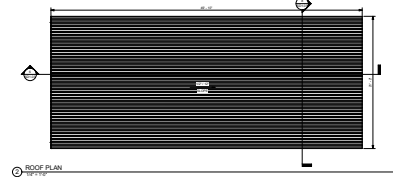
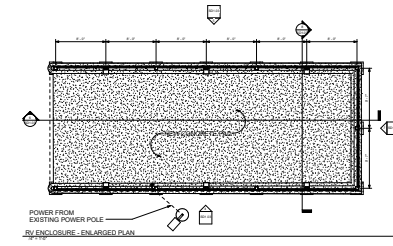
POWER FROM EXISTING LIGHT POLE

**PARKING STALLS**

EXISTING	62 (6 ADA)
NEW	97
<b>TOTAL</b>	<b>159</b>

**LEGEND**

- AREA OF WORK
- LIFELINE MOBILE PATH
- LIFELINE MOBILE CARPORT POWERLINE



**RV ENCLOSURE DESIGN**

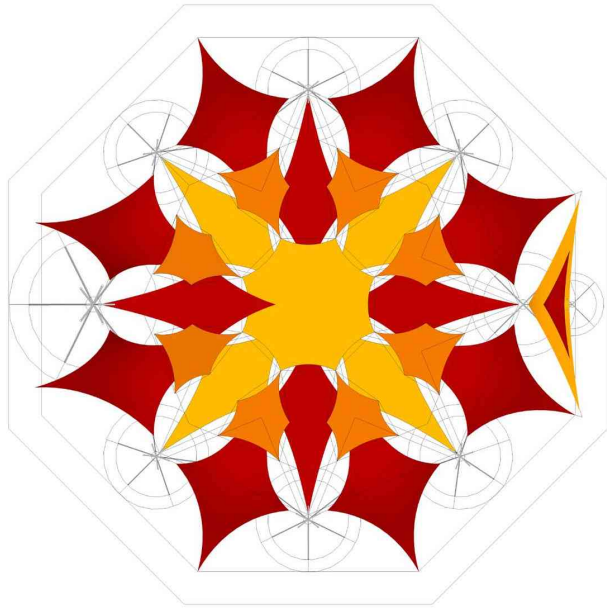
**SITE PLAN**

# YFVWC Salud Parking Masterplan | Woodburn, OR | 2016

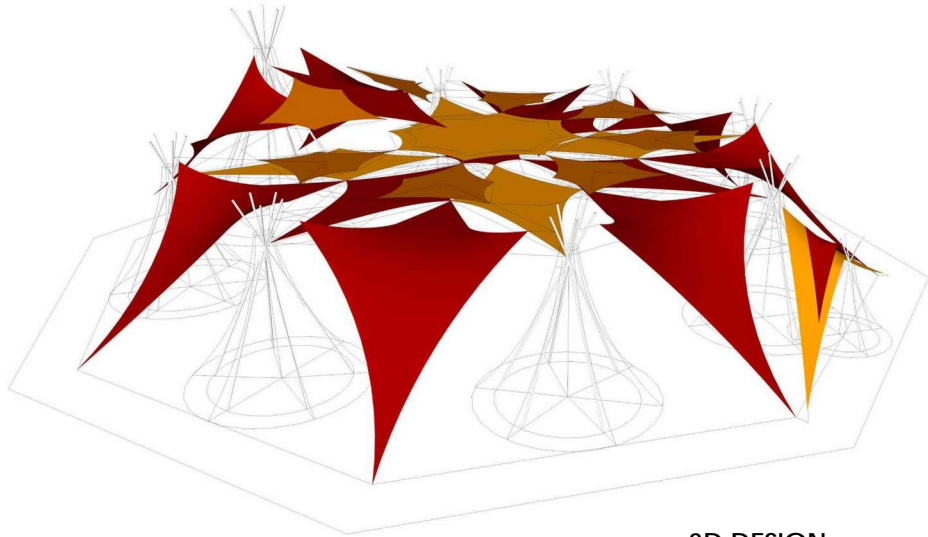
Role: BIM Modeler    Cost: N/A (Design Only)    Status: Complete (Design Only)    Size: N/A

Masterplan study for multiple parking lot options and RV enclosure design at existing rural clinic.

Responsibilities: BIM modeling and drafting  
 Assembling presentation material  
 3D visualization and 2D renderings



INSTALLATION  
PHOTOS



3D DESIGN



## Red Lightning | 2014

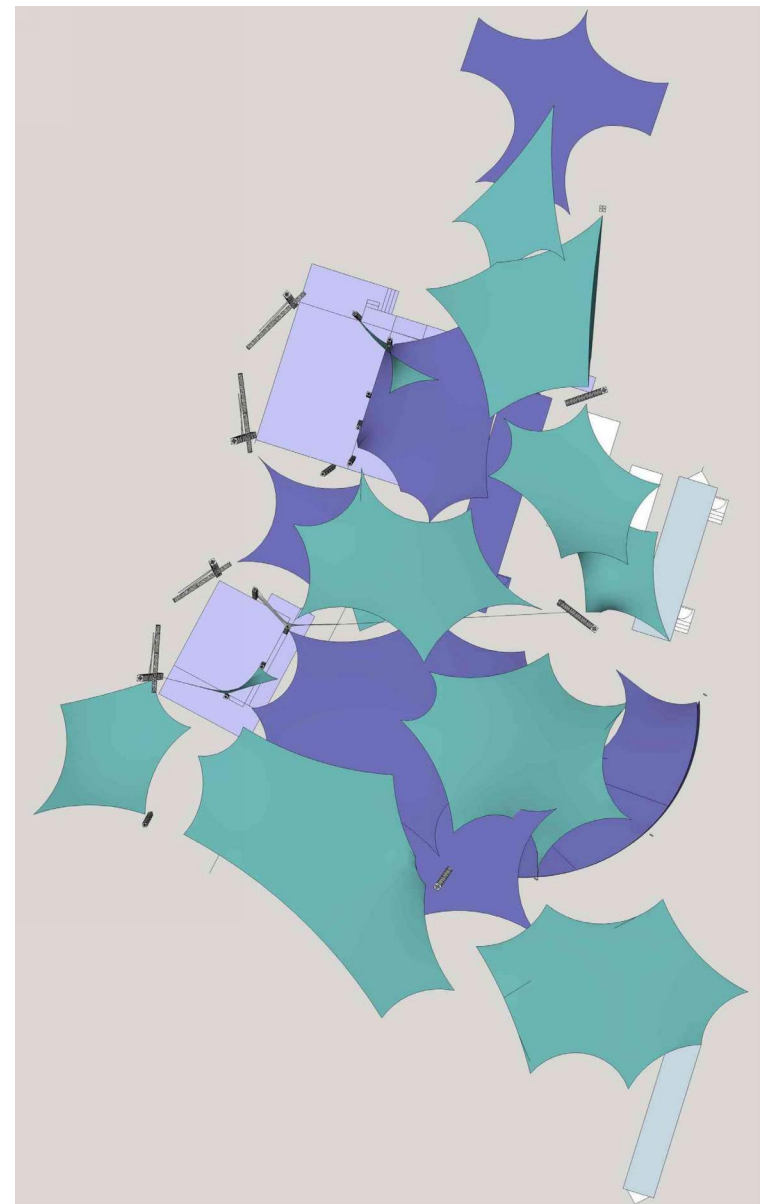
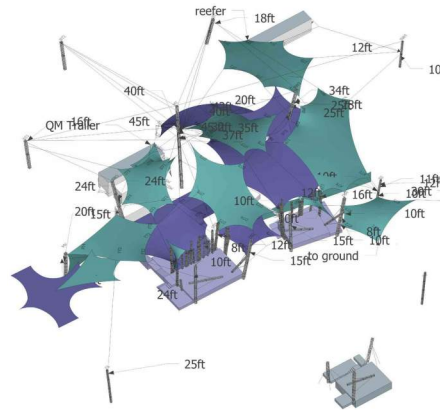
Role: 3D Modeler, Drafter    Status: Complete (Temporary Installation)

Tensile fabric design for temporary installation at festival.

Responsibilities: 3D Modeling  
Fabric Template Design  
Drafting



INSTALLATION PHOTOS



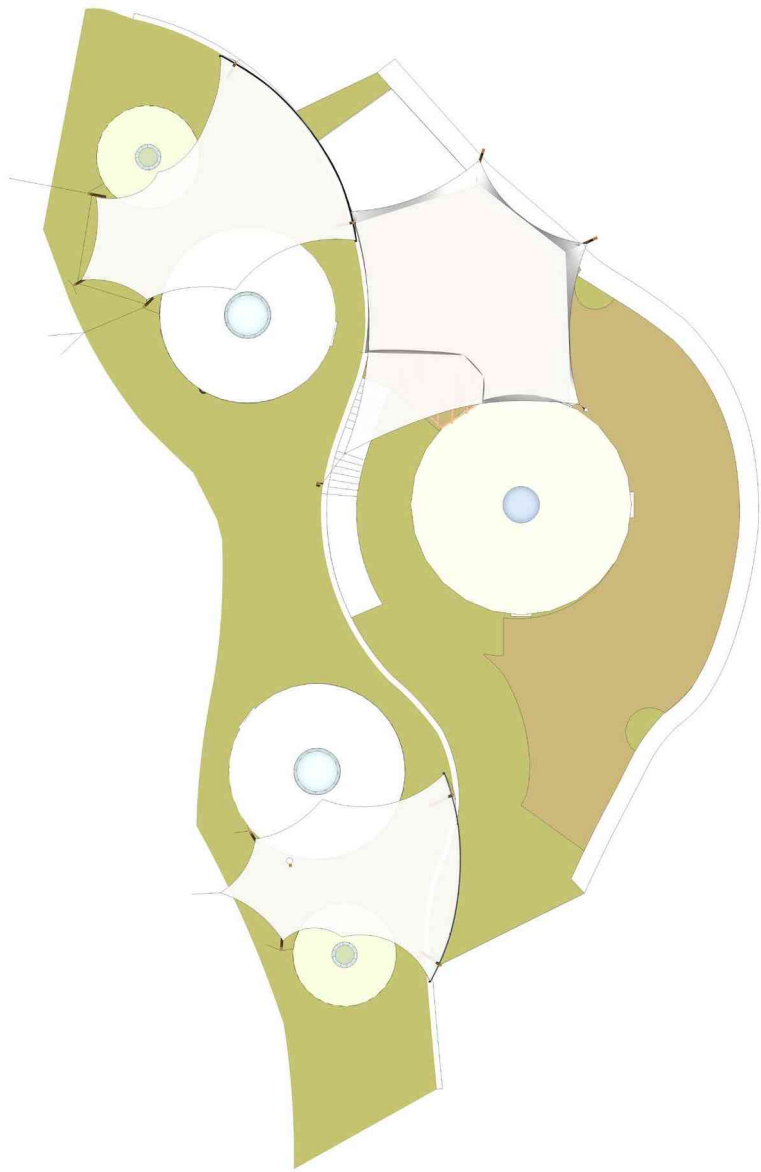
3D DESIGN AND PLAN

# Pickathon | Happy Valley, OR | 2014/2015

Role: 3D Modeler, Drafting    Status: Complete (Temporary Installation)

Tensile fabric design for temporary installation at music festival over multiple years.

Responsibilities: 3D Modeling  
Fabric Template Design  
Drafting  
Installation



3D DESIGN AND PLAN



INSTALLATION PHOTOS

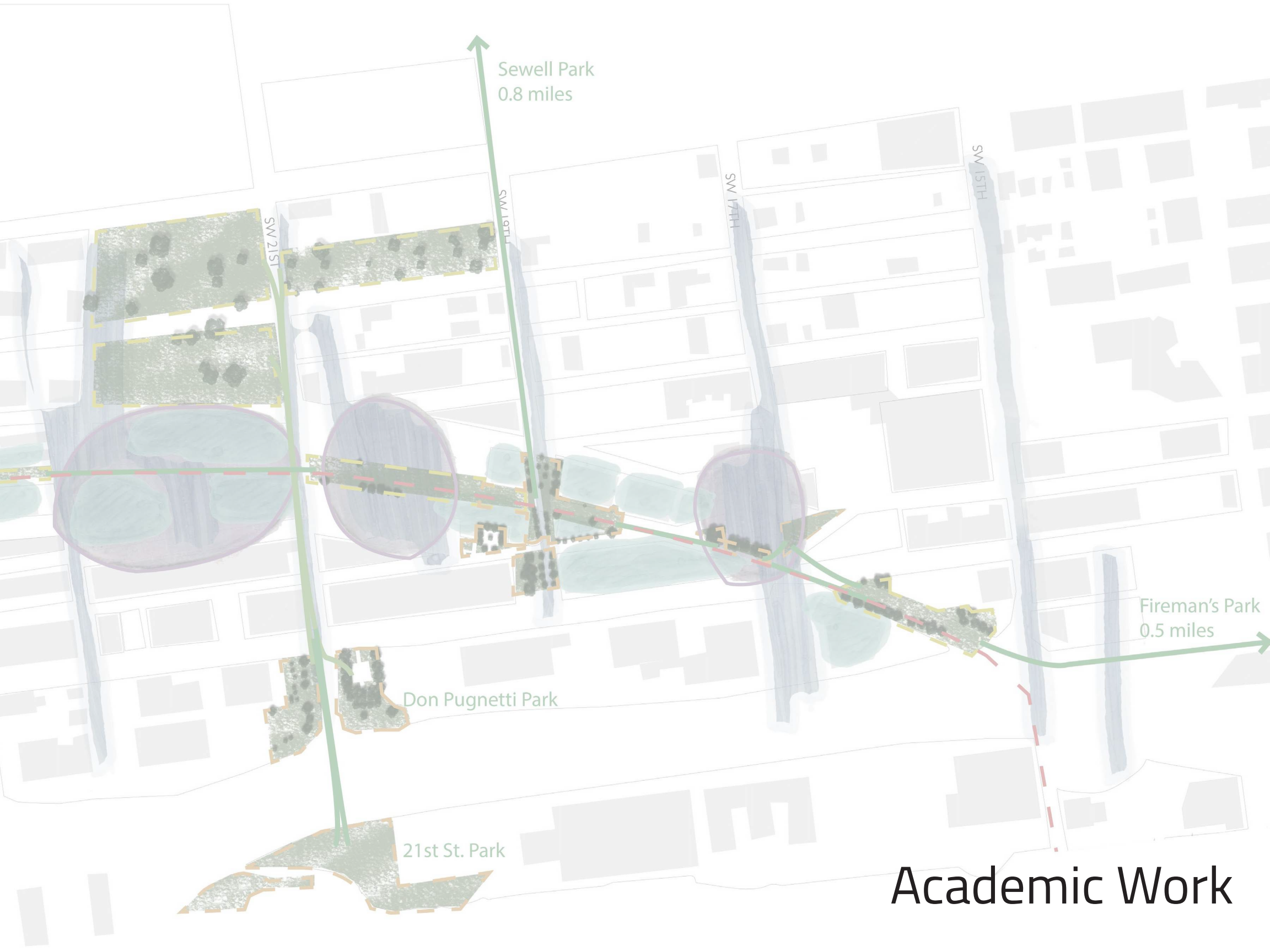
## Ahamtouli | Corfu Island, Greece | 2015

Role: 3D Modeler, Drafting    Status: Complete

Tensile fabric design of shade cloth structures for yurt resort/

Responsibilities: 3D Modeling  
Fabric Template Design  
Drafting





Sewell Park  
0.8 miles

SW 21ST

SW 19TH

SW 17TH

SW 15TH

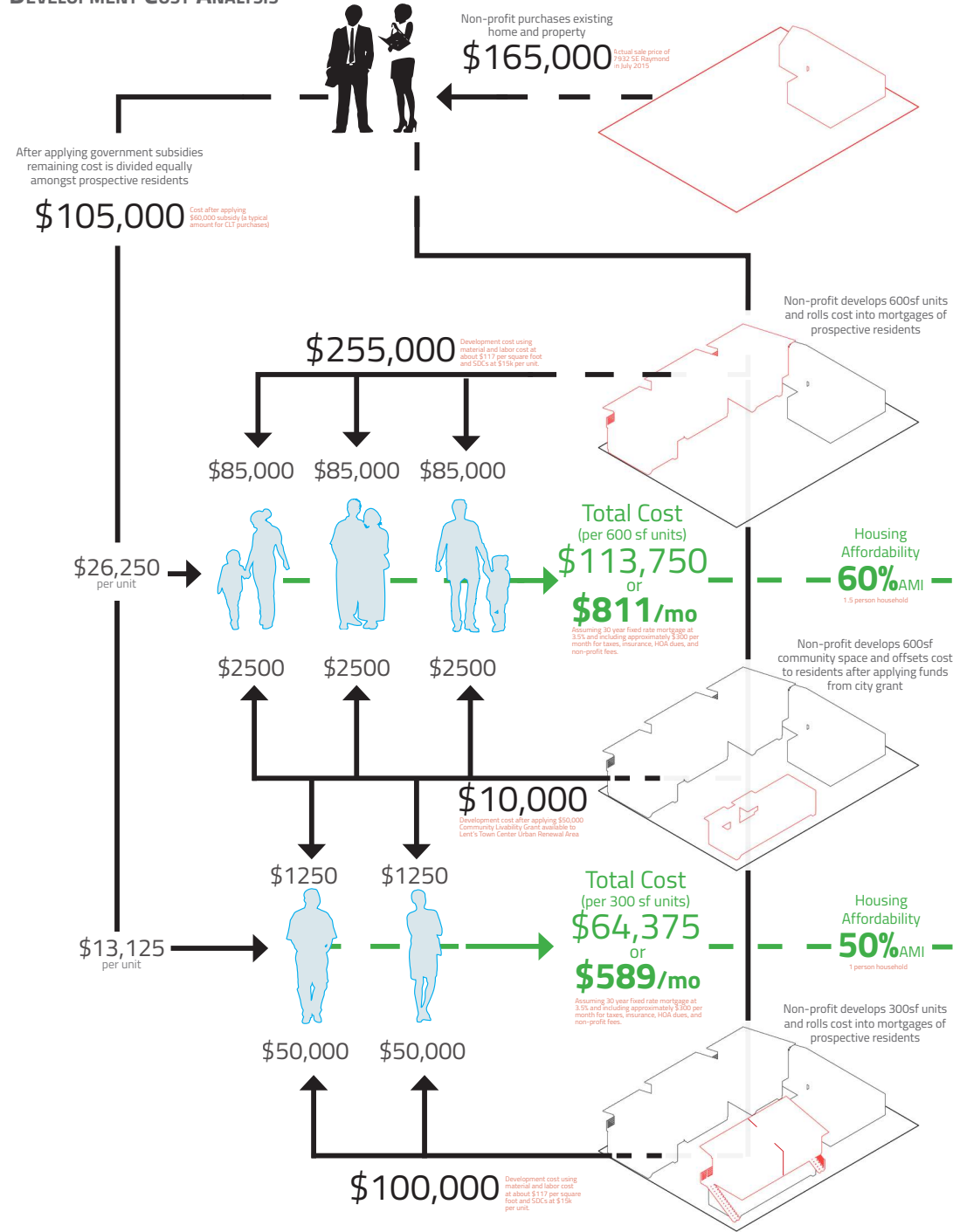
Don Pugnetti Park

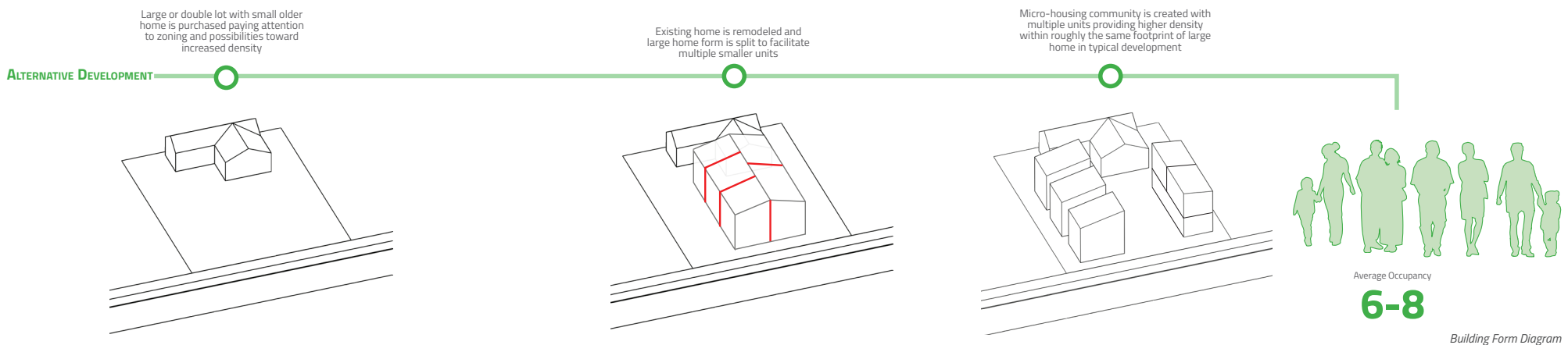
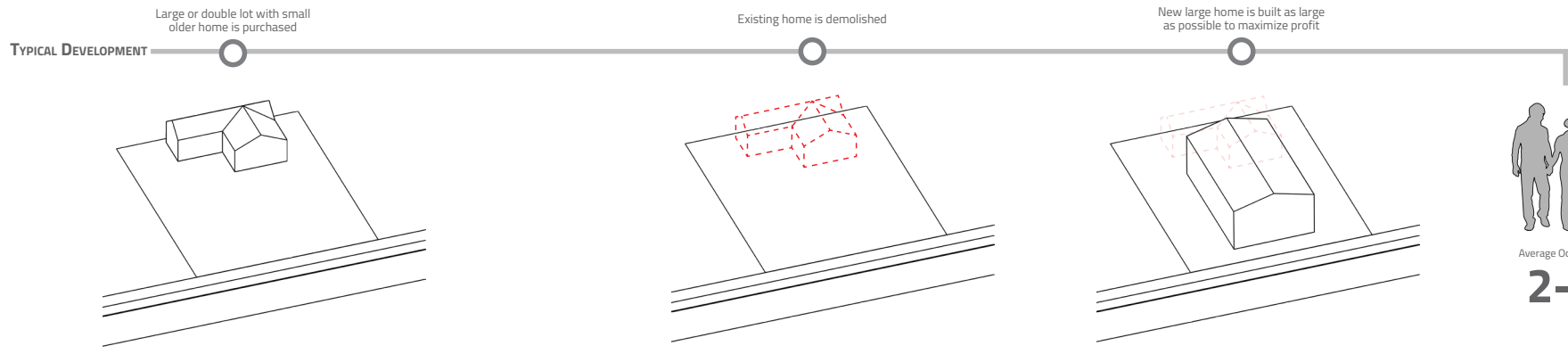
21st St. Park

Fireman's Park  
0.5 miles

Academic Work

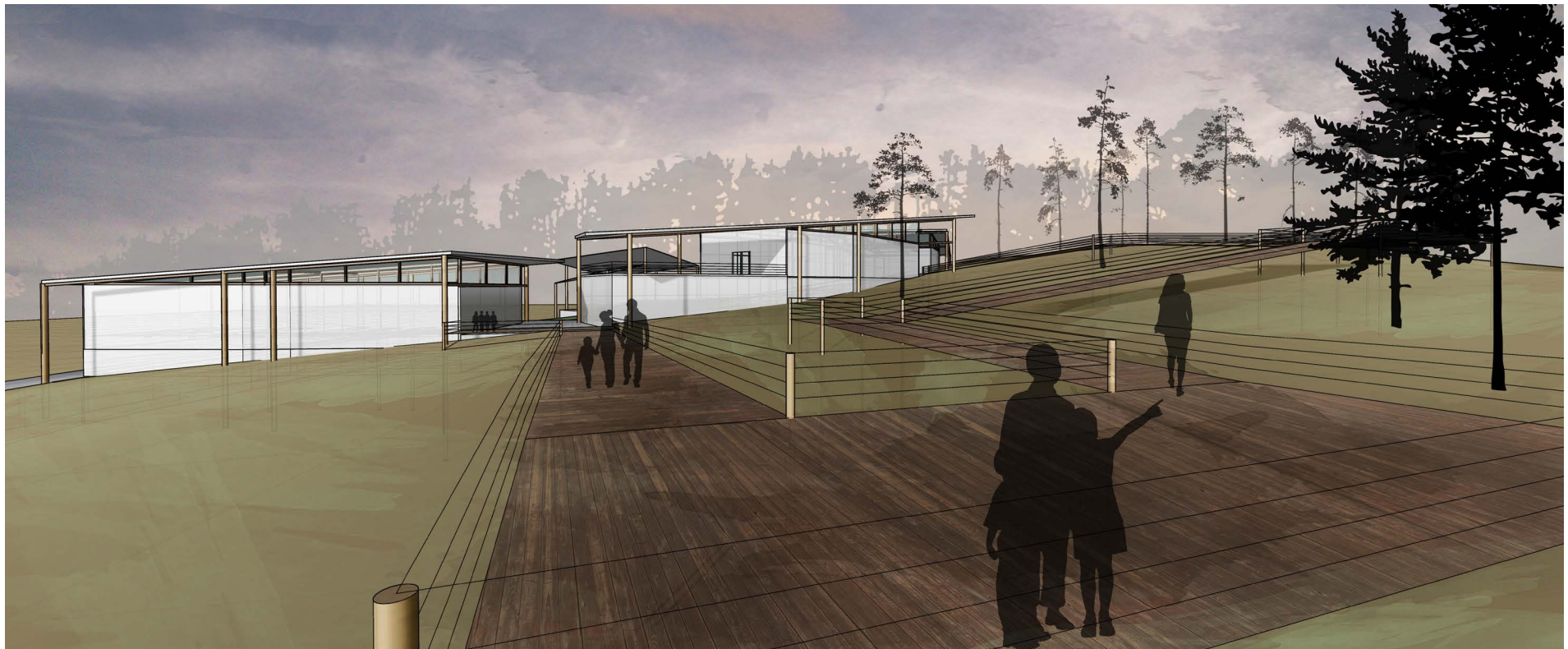
# DEVELOPMENT COST ANALYSIS



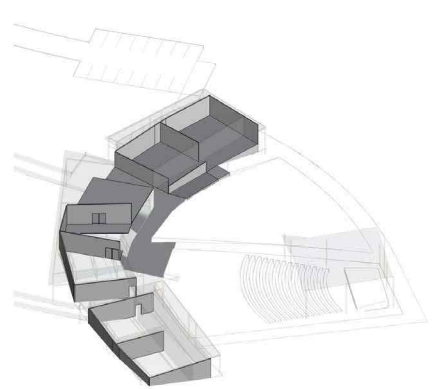
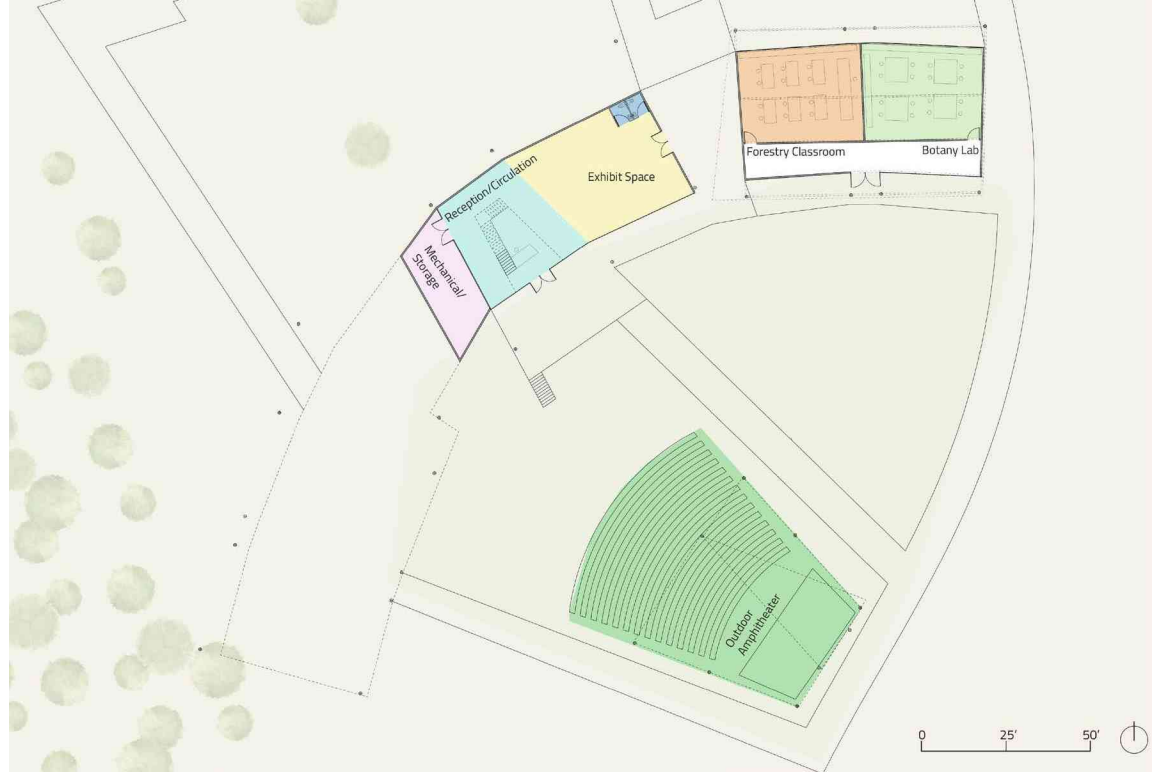




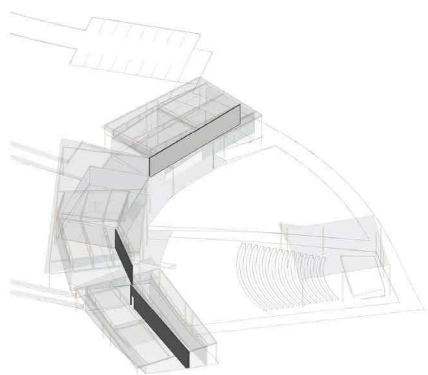




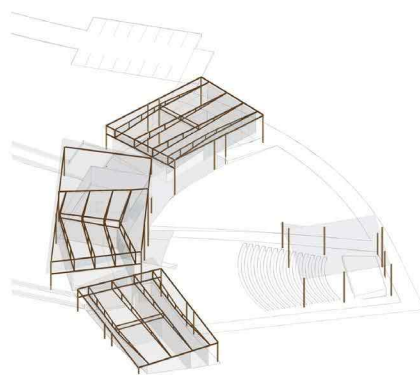
**WIND MOUNTAIN SCIENCE & NATURE CENTER** | Graduate Studio Project [2015]



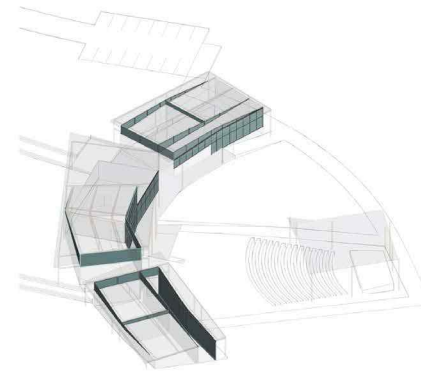
Poured in Place Concrete



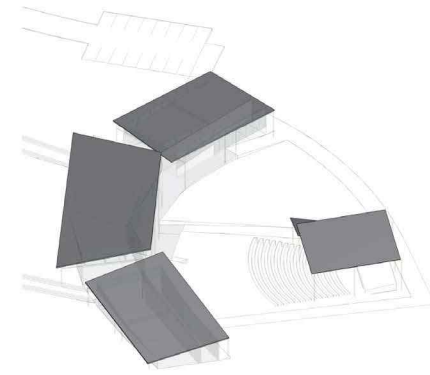
Board Formed Concrete



Heavy Timber



Glass/Steel Frame Windows



Standing Seam Metal Roof





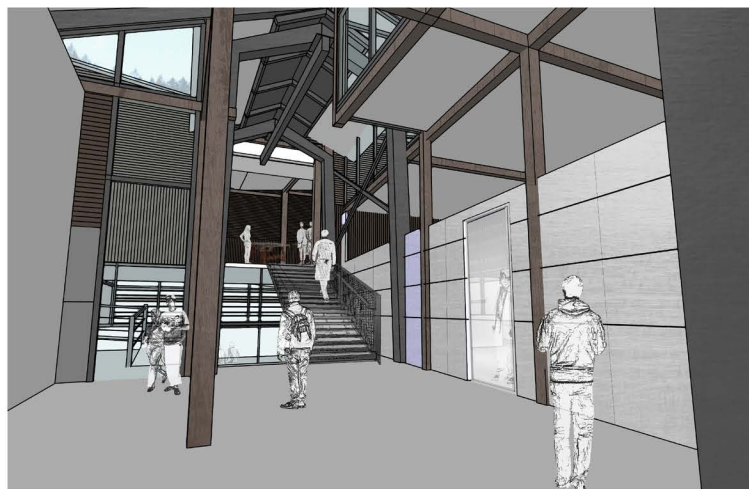
Exterior - Looking Northwest



Exterior - Looking Southwest



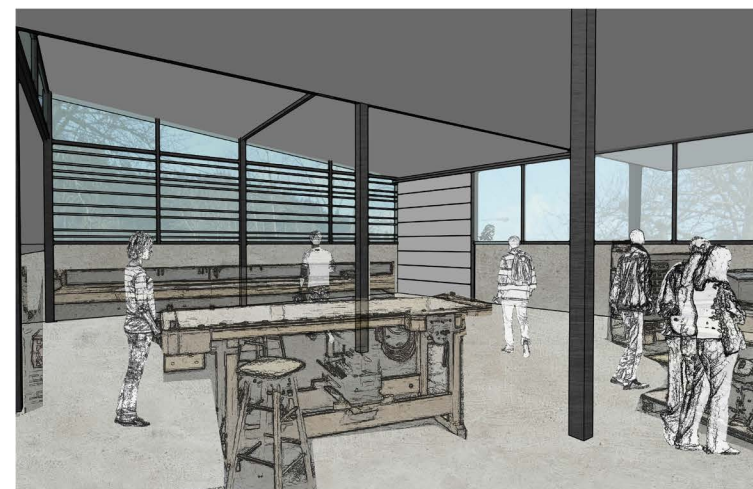
Exterior - Looking East



Interior - Entry



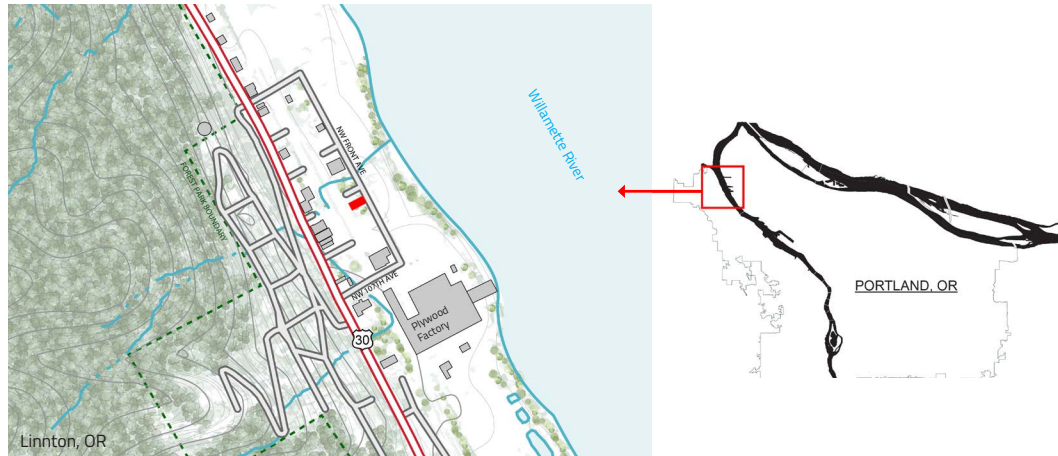
Interior - Woodshop



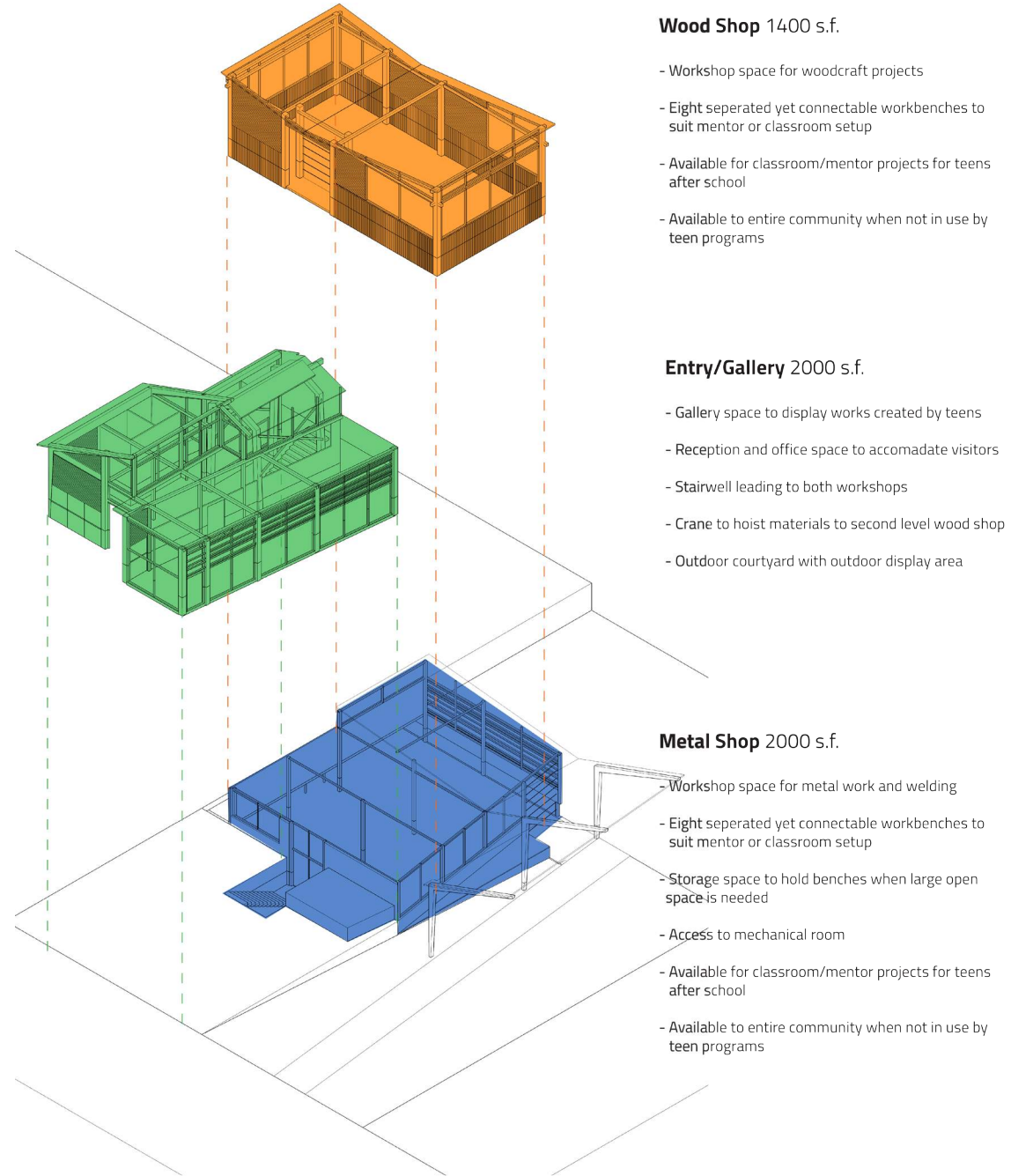
Interior - Metal Shop



# Linnton Community Workshop



Linnton Community Workshop Site

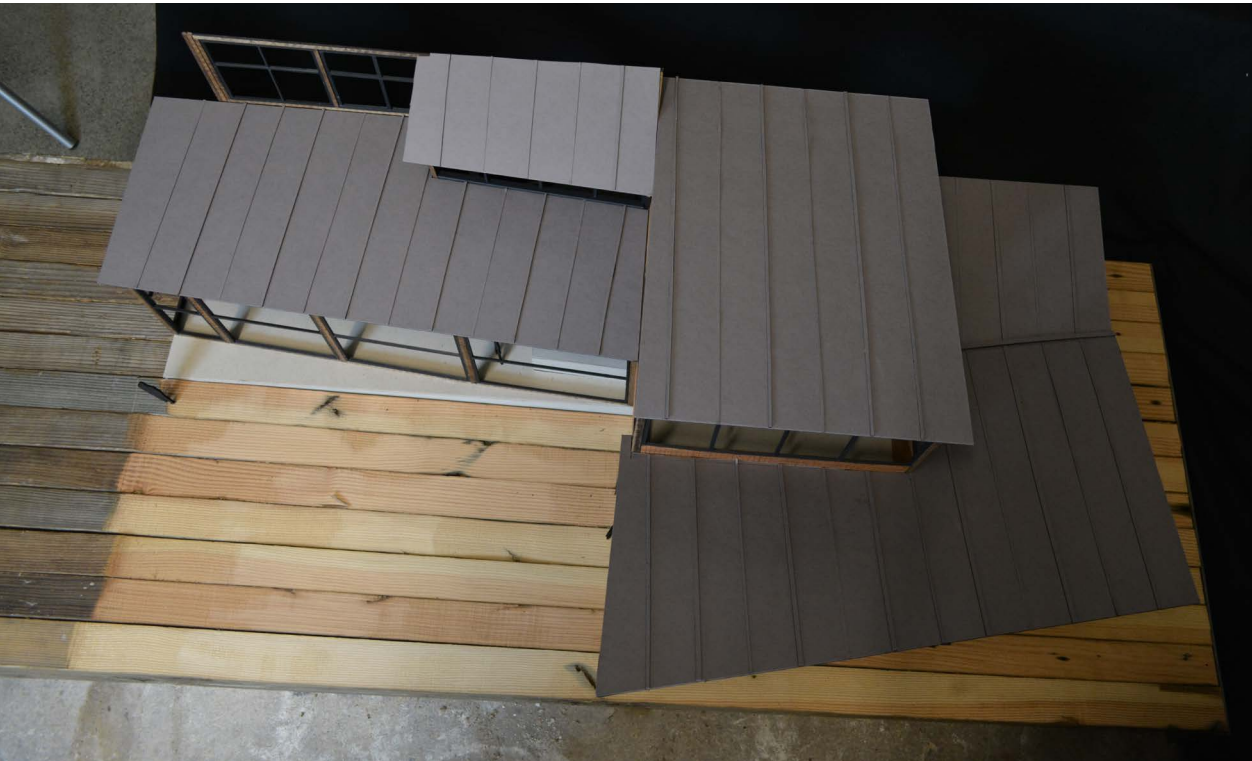
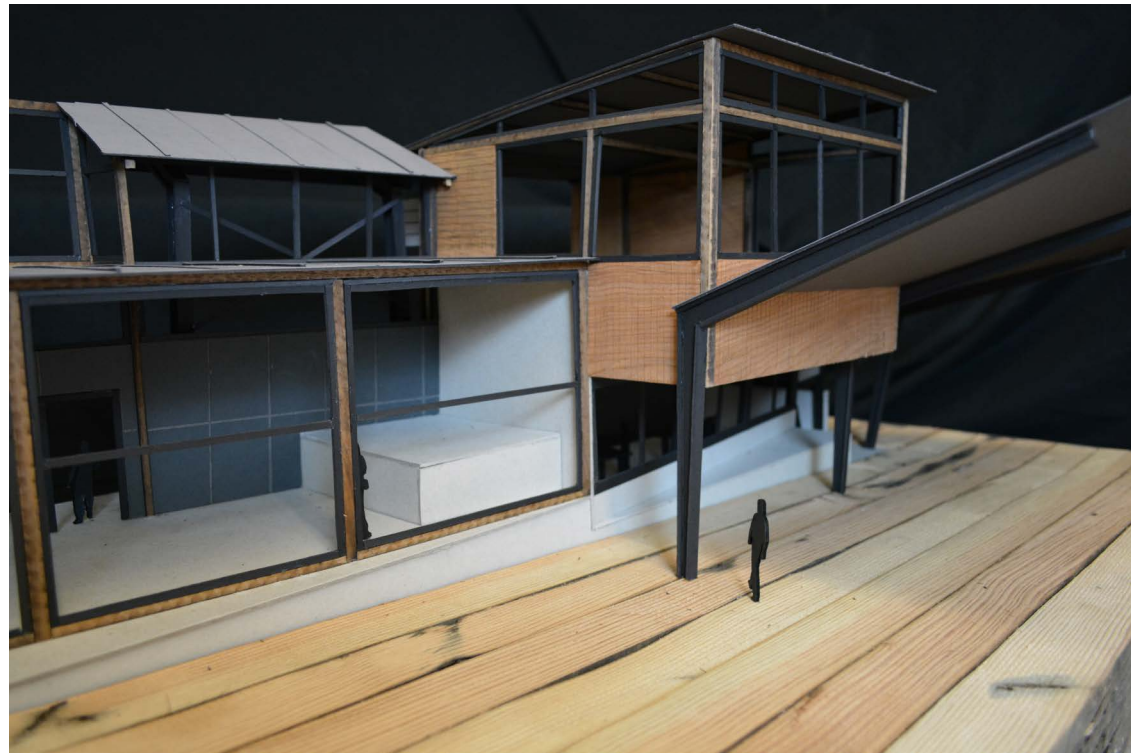


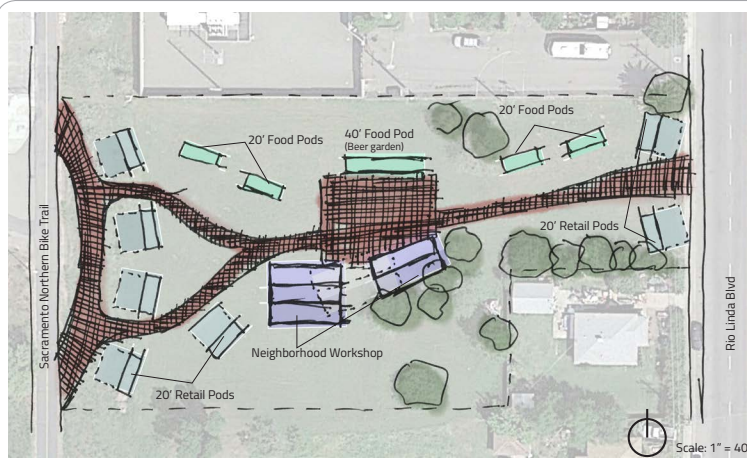
Linnton Community Workshop Program Diagram





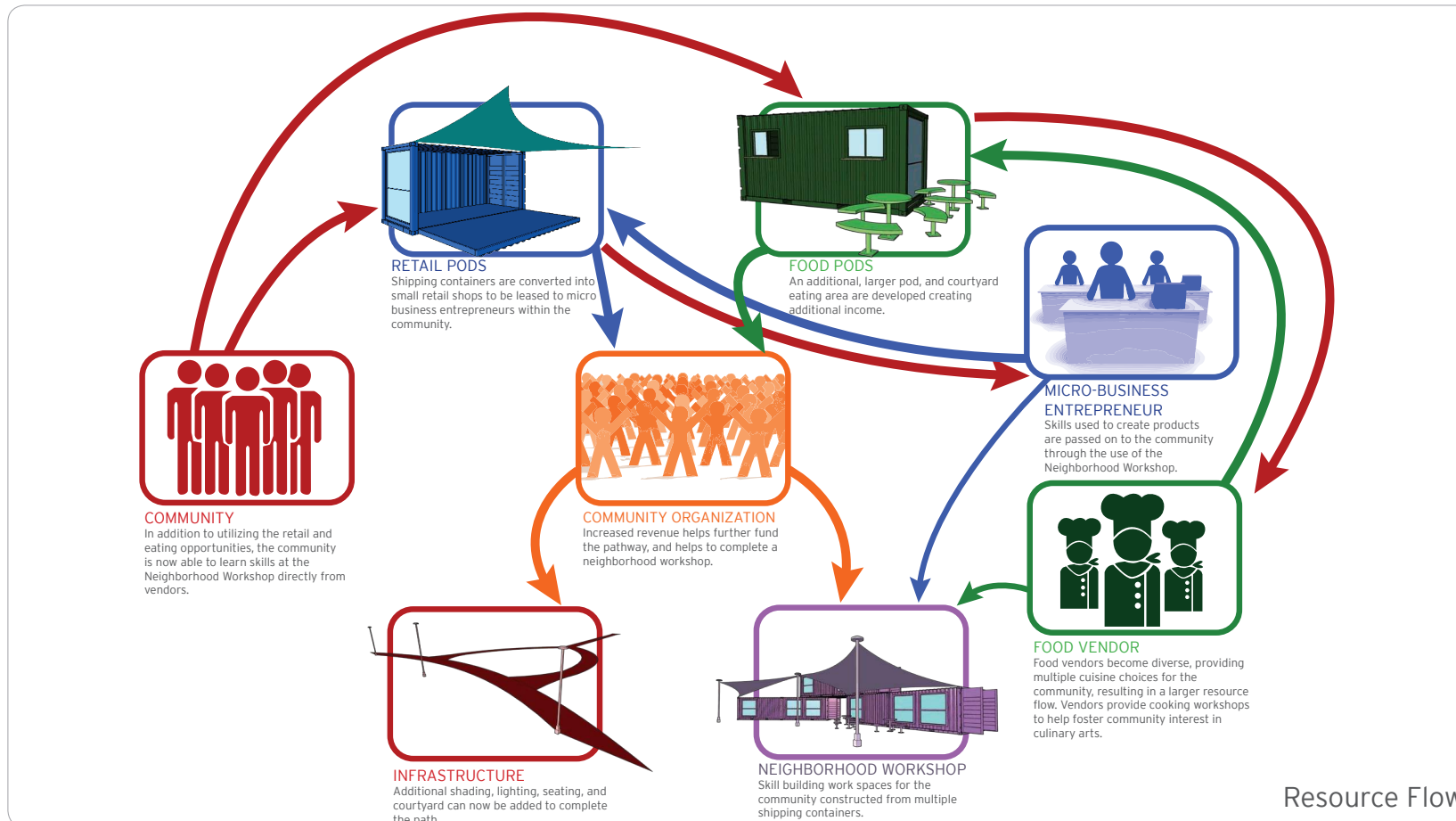
Final Model





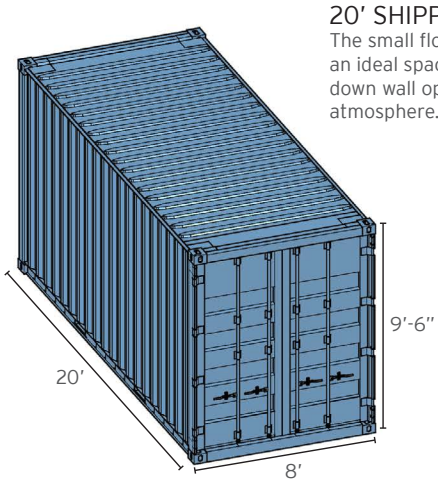
The final stage of development adds further **eating spaces** through a large **covered courtyard** with seating situated between an additional food pod and the **neighborhood workshop**. Additionally, the workshop will be expanded to reach the spatial requirements of the intended program. Another large canopy will be added for more shade above an open space, and lighting will now run along the entire pathway.

Site Map



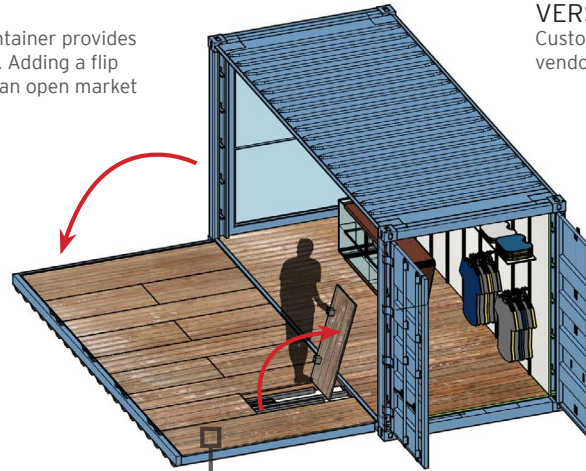
Resource Flow

# RETAIL POD



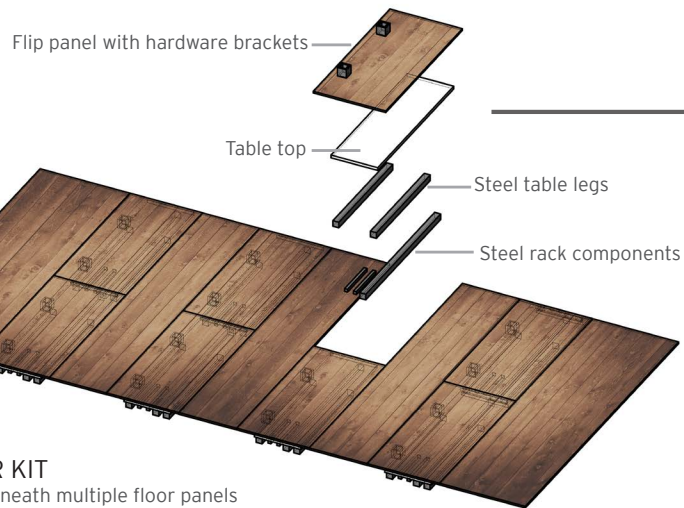
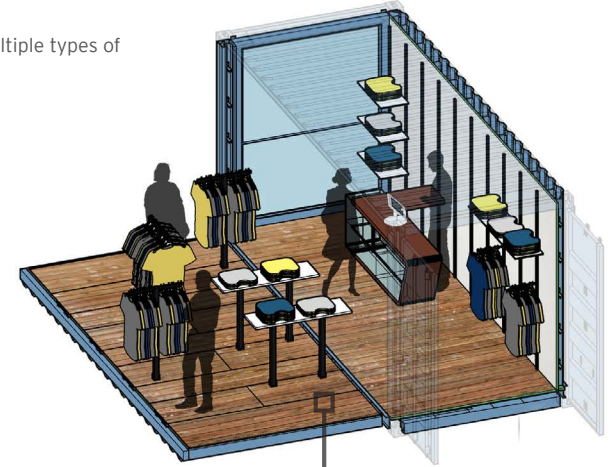
## 20' SHIPPING CONTAINER

The small floor plan of a shipping container provides an ideal space for a micro-enterprise. Adding a flip down wall opens the space to create an open market atmosphere.



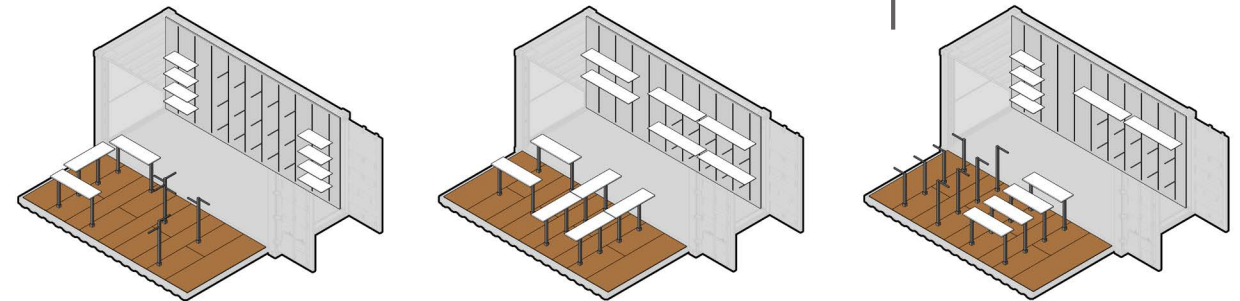
## VERSATILE SPACE

Customizable units are ideal for multiple types of vendors within the same area.



## MODULAR KIT

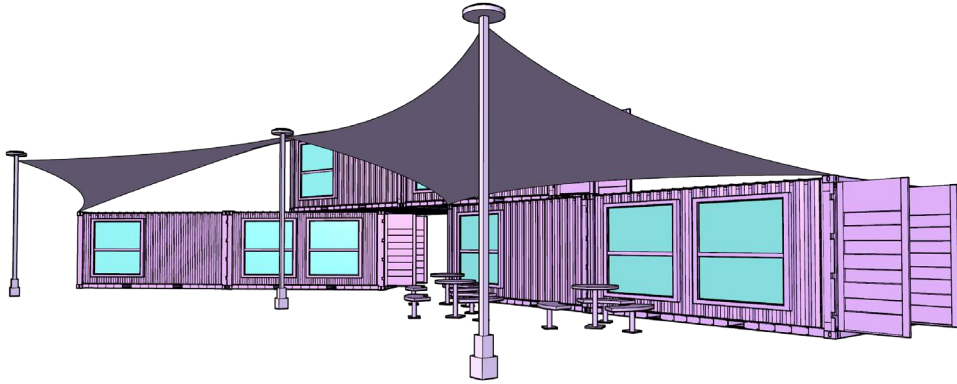
Stored underneath multiple floor panels are components to modify each unit to fit various vendor needs.



## MULTIPLE CONFIGURATIONS

Customizable back wall and floor plates allow for a multitude of various setups to accommodate the different types of goods to be sold within the retail pod.

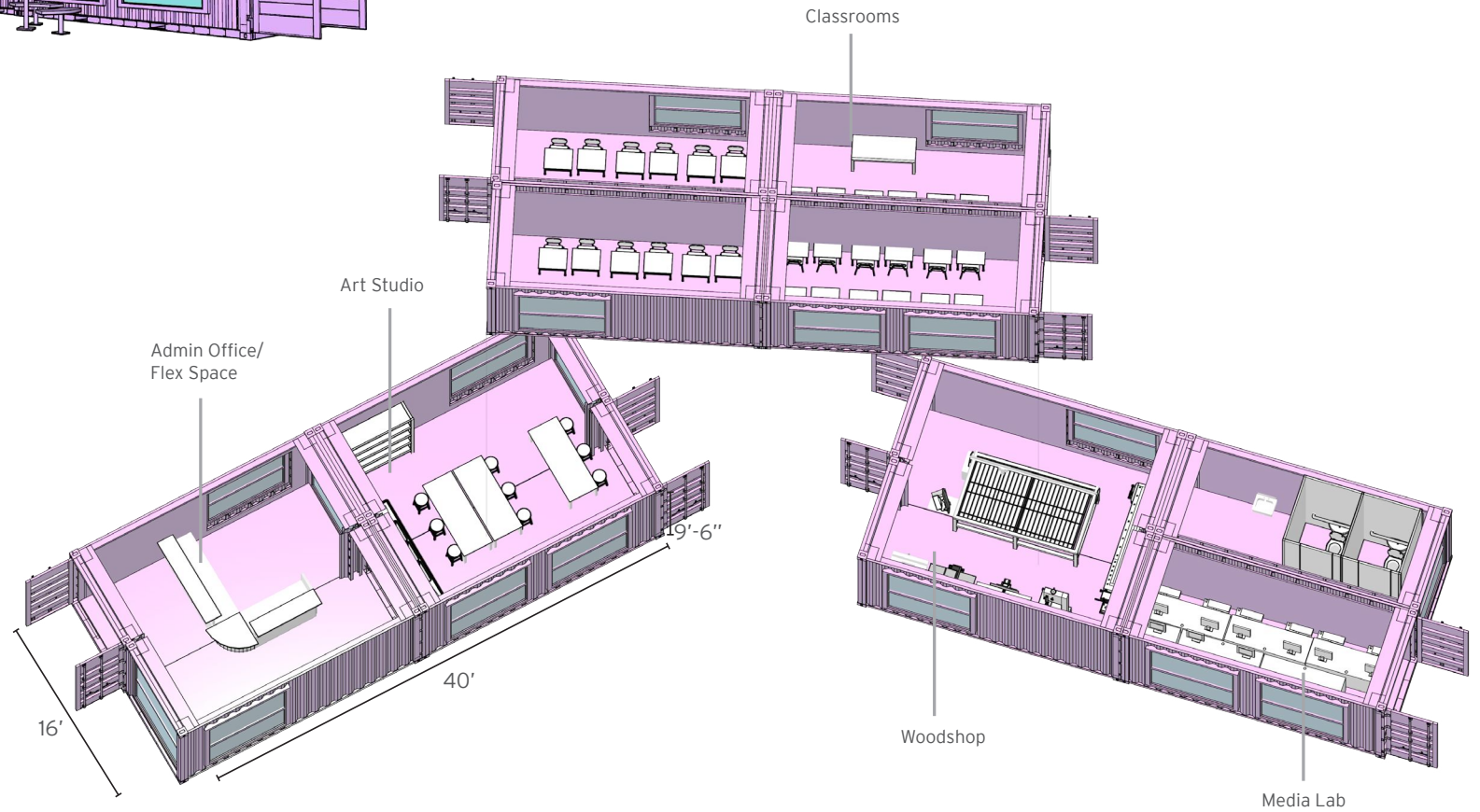
# NEIGHBORHOOD WORKSHOP



## COMBINING SHIPPING CONTAINERS

Using methods of stacking and combining of shipping container is ideal for the construction of the Neighborhood Workshop.

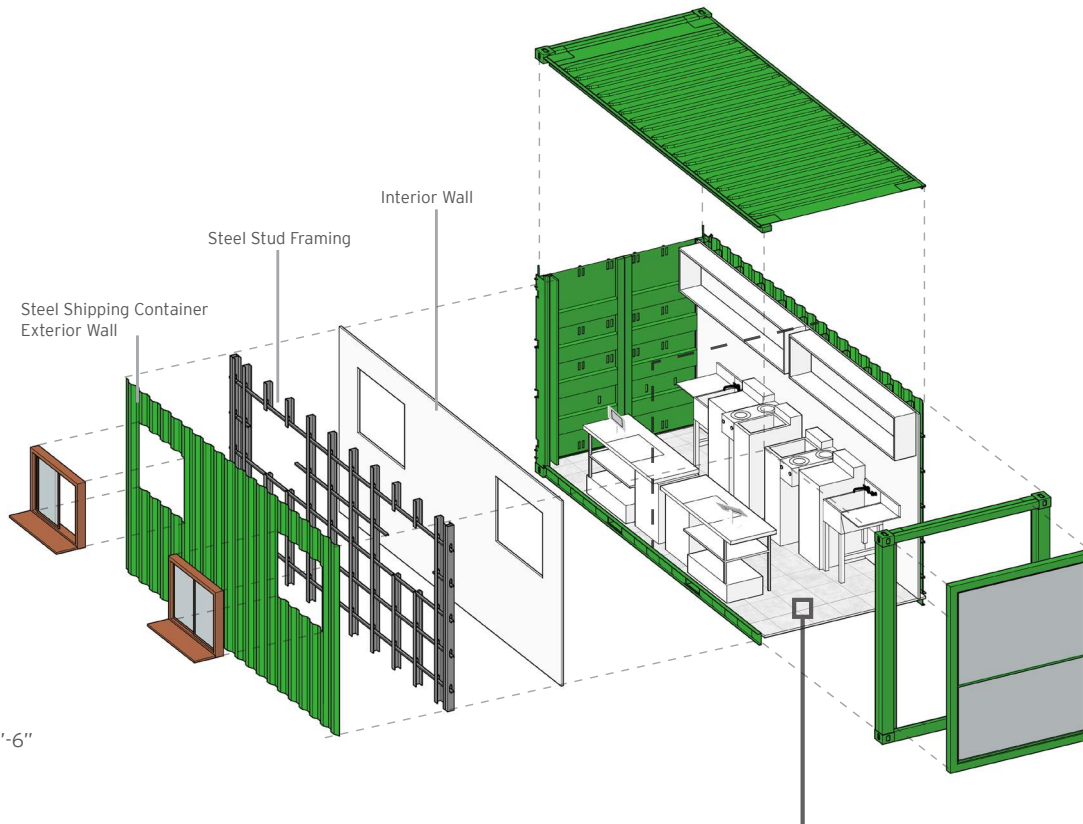
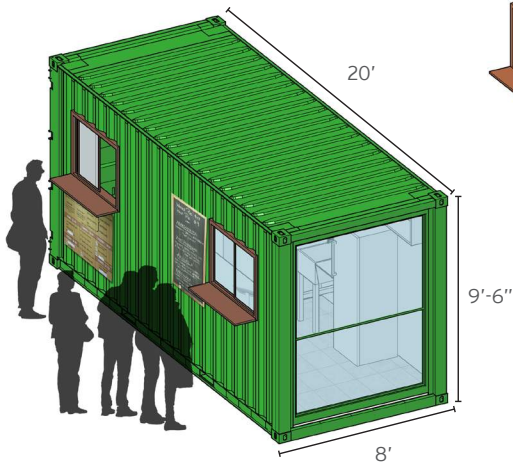
Doubling the units provides larger open spaces to fulfill the needs of various skill building labs while maintaining the same architectural language used throughout the site for the retail and food pods.



# FOOD POD

## 20' SHIPPING CONTAINER

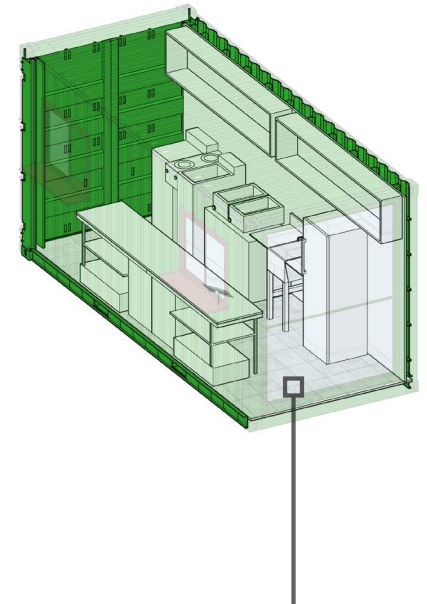
The small floor plan of a shipping container provides an affordable option for both a double vendor configuration or a larger single unit.



## SHARED CONFIGURATION

These units contain smaller kitchens suitable for vendors who require fewer amenities and would like to pay less rent.

Each unit has a single walk up window and contains a small stove, single fryer, mini refrigerator and utility sink.



## SINGLE KITCHEN CONFIGURATION

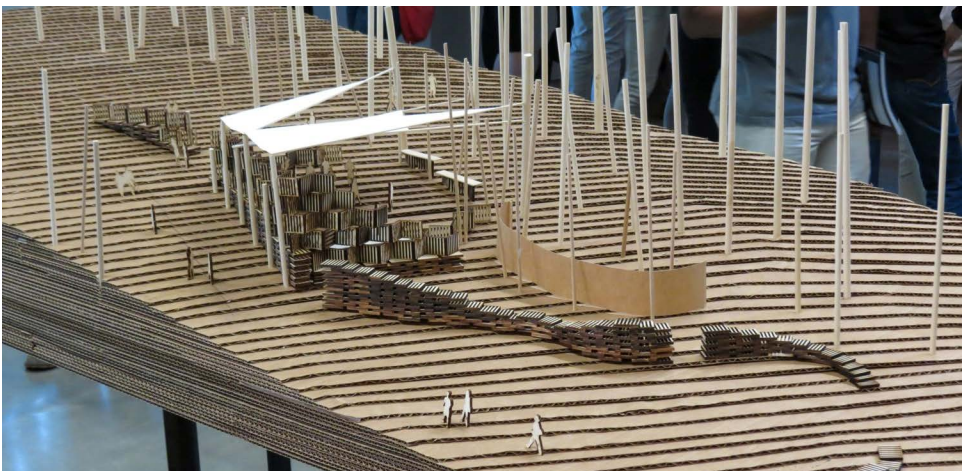
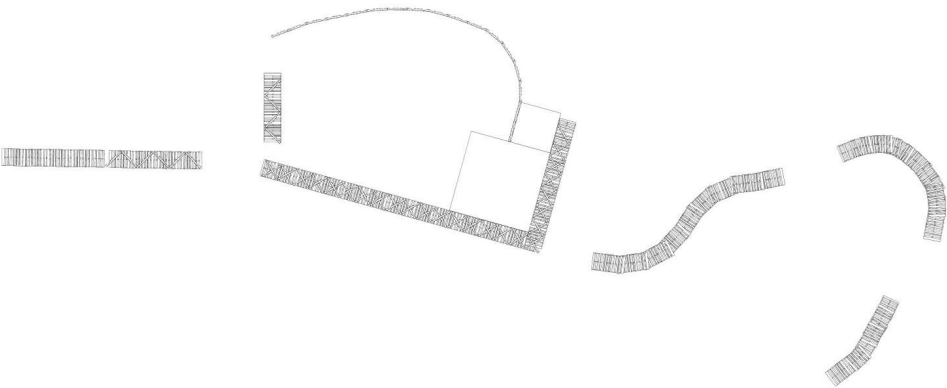
These units are for vendors who require more space to accommodate more complex cooking needs.

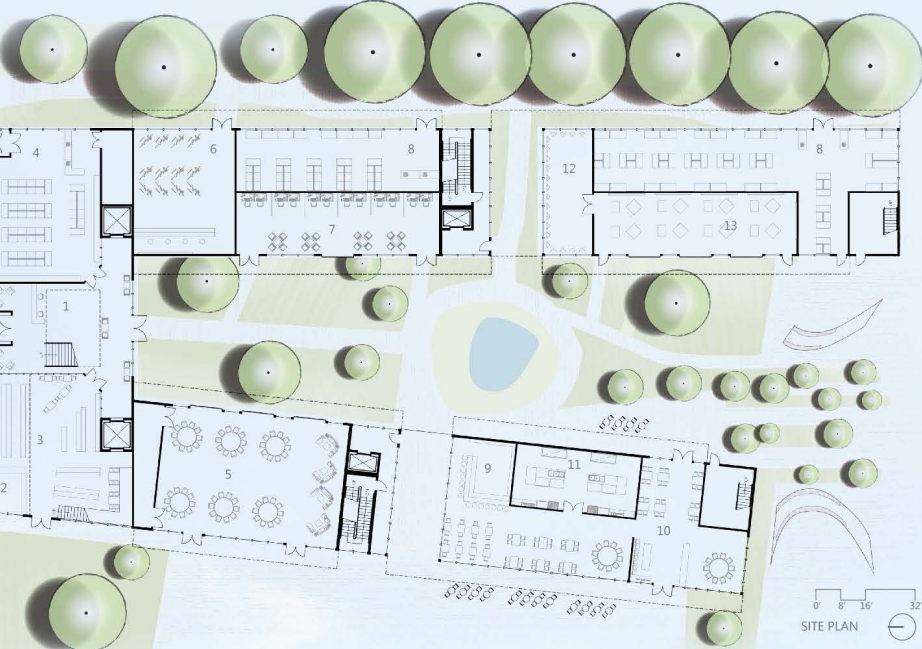
Each unit has order and pick-up windows and contains a small stove, oven, double fryer, refrigerator, freezer, and utility sink.



PICKATHON DESIGN BUILD - TREE LINE PALLET STAGE | Graduate Project [2014]







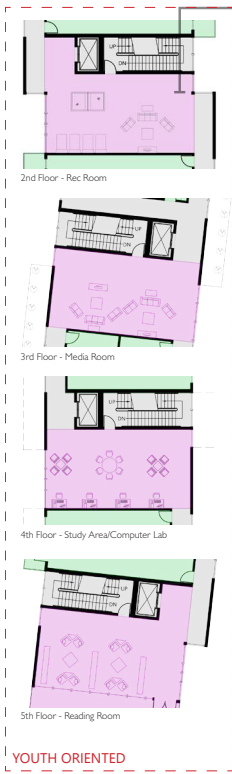
- 1 LOBBY
- 2 COFFEE SHOP
- 3 LIBRARY
- 4 FOOD COOP
- 5 EVENT SPACE
- 6 BIKE SHOP
- 7 TECH SPACE
- 8 RETAIL
- 9 BAR
- 10 RESTAURANT
- 11 KITCHEN
- 12 ART DISPLAY
- 13 ART STUDIO

# INFUSE

INTERGENERATIONAL LIVING

The active boomer generation serve as mentors to the at risk youth population by facilitating workshops and interacting through mixing chambers amidst pathways leading to separate residential wings. Ground floor retail presents opportunity for at risk youth to gain work experience and further develop skills toward independent living. The lines of public and private are blurred by the spilling out of the inner courtyard into the public realm, as well as lower level retail bordering the existing landscape of the adjacent park.





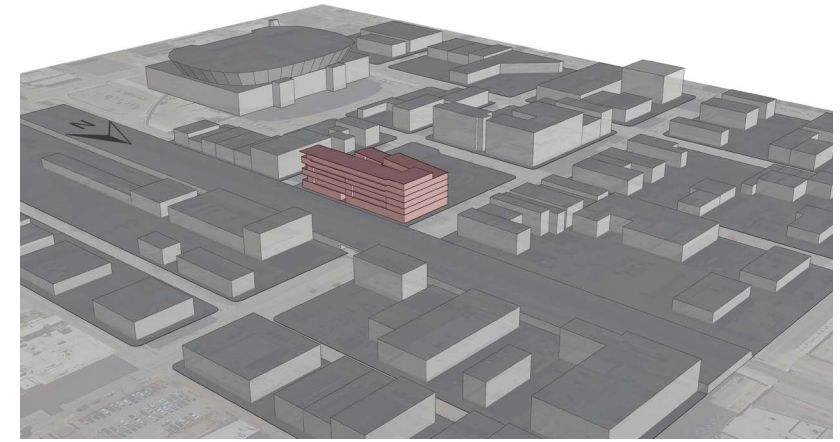
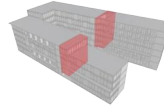
YOUTH ORIENTED



SENIOR ORIENTED

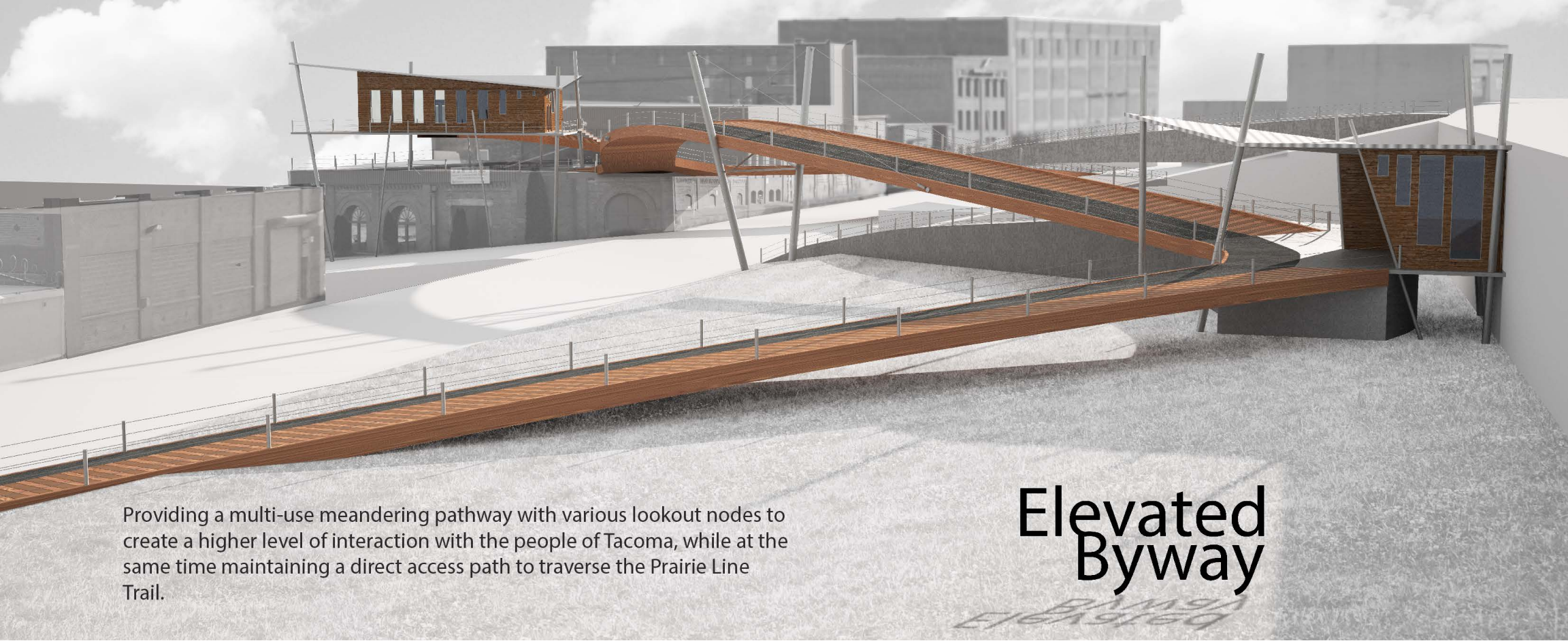


MINOR MIXING ROOMS



SCALE 1/16"=1'0"

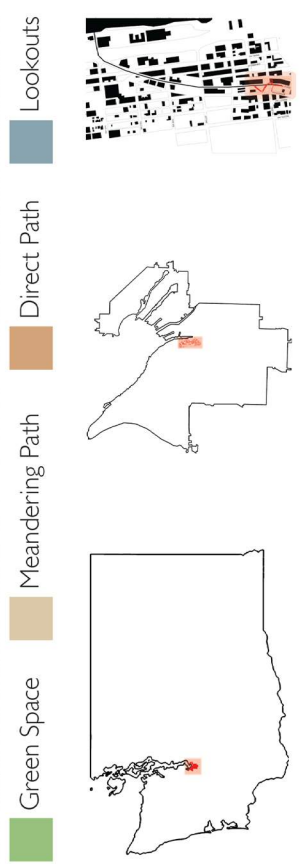




Providing a multi-use meandering pathway with various lookout nodes to create a higher level of interaction with the people of Tacoma, while at the same time maintaining a direct access path to traverse the Prairie Line Trail.

# Elevated Byway





1



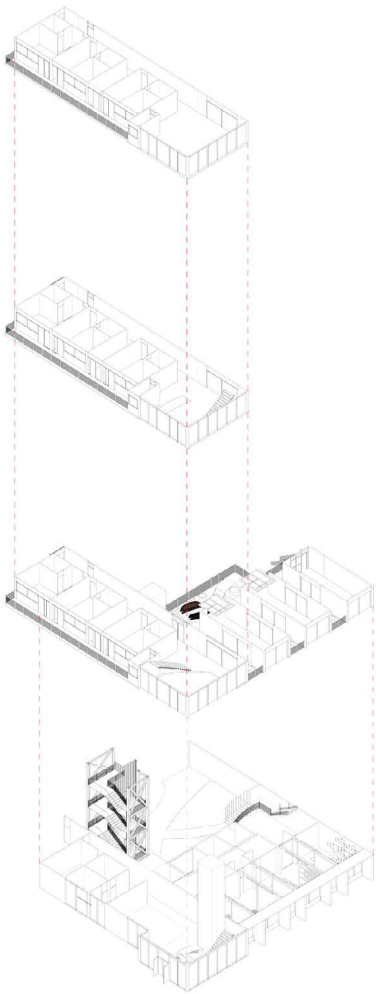
2



3



4



Front Lobby



North Facade



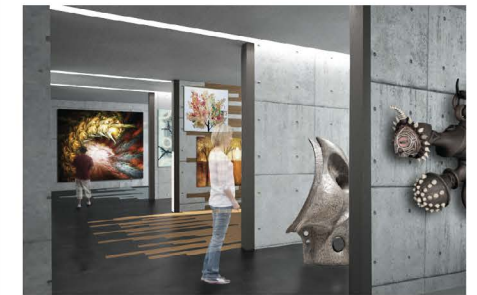
Quad / Outdoor Sculpture Gallery



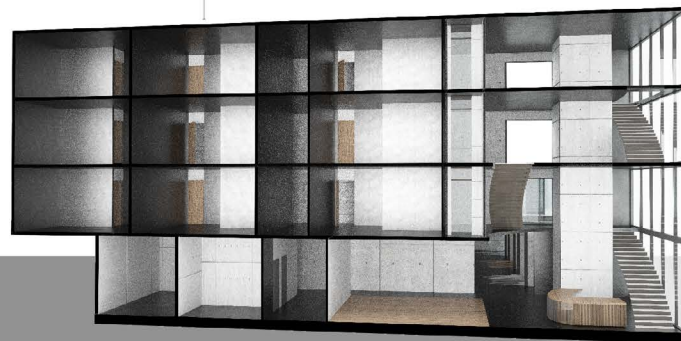
Dorm Room



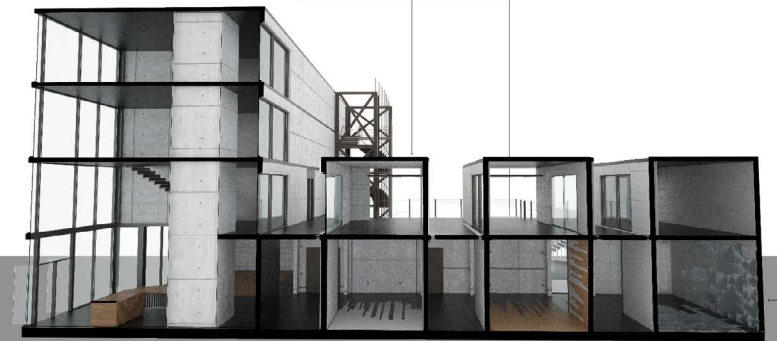
Roof Top Garden / Individual Workspaces



Indoor Gallery



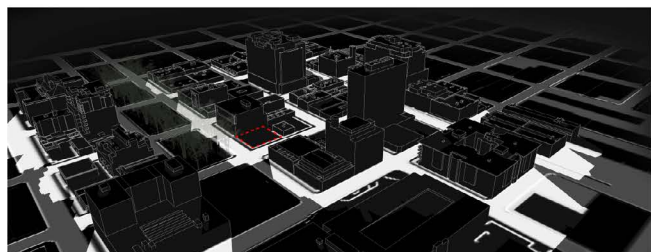
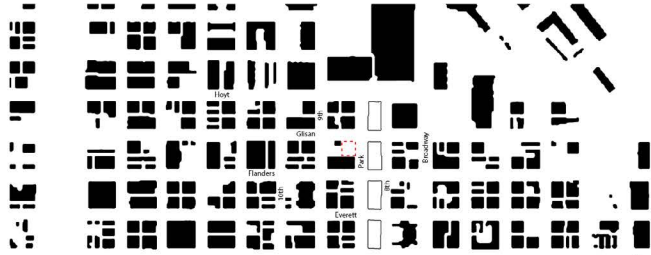
Section of East Facade



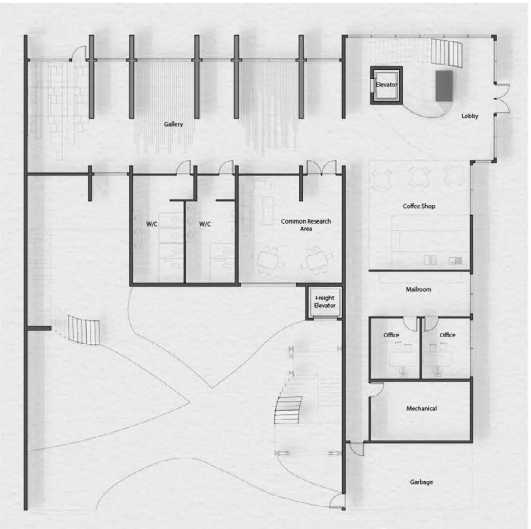
Section of North Facade



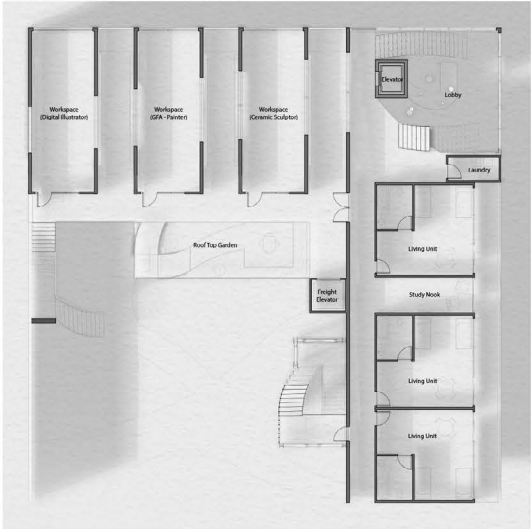
Site Map



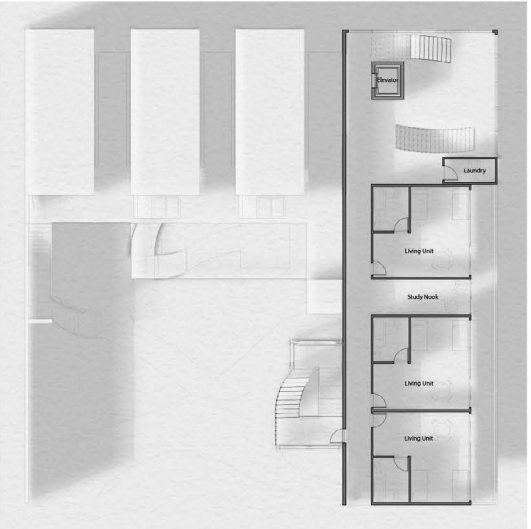
Vicinity Maps



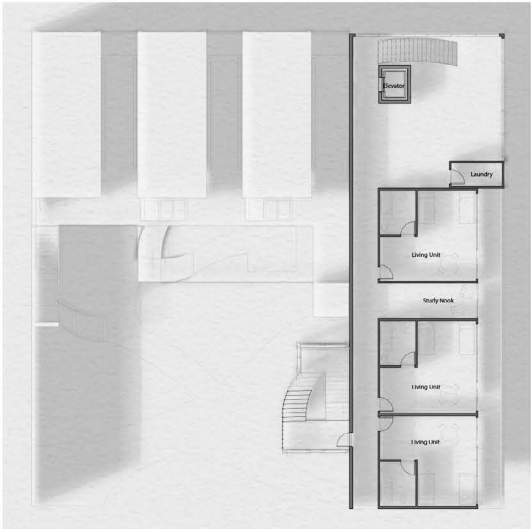
Plan\_Ground Level



Plan\_Second Level



Plan\_Third Level

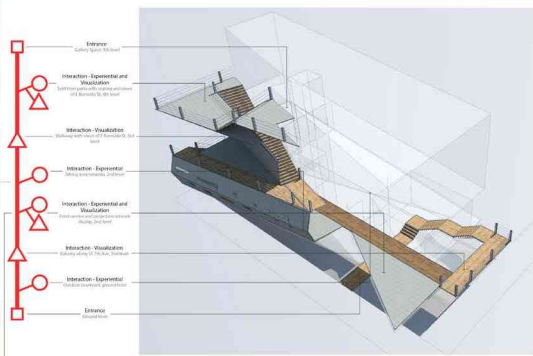


Plan\_Fourth Level

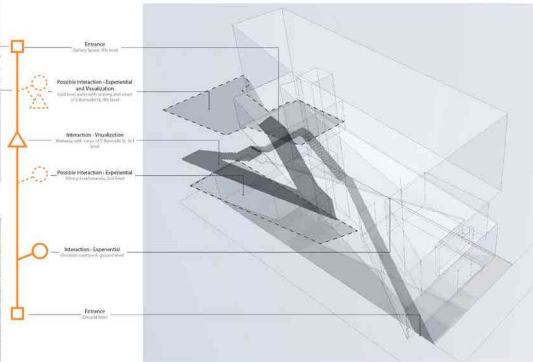
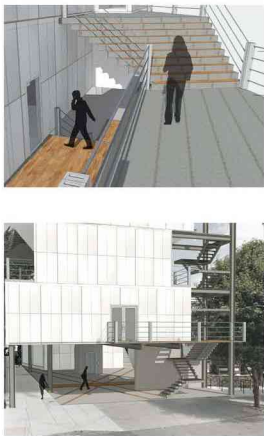




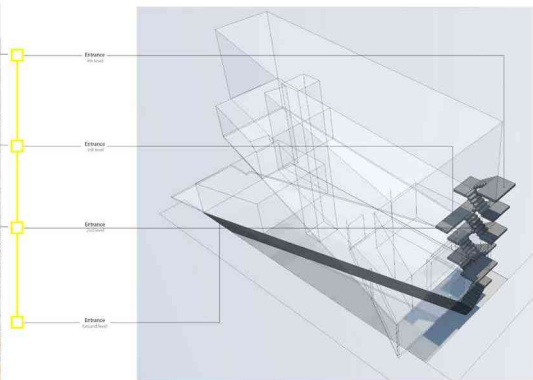
EXPLORATORY



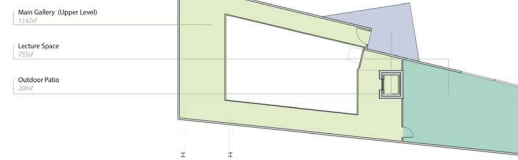
INTERMEDIARY



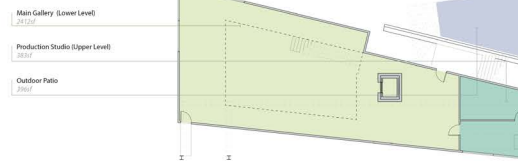
DIRECT



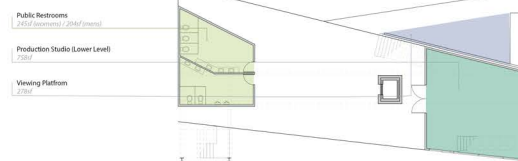
5TH LEVEL



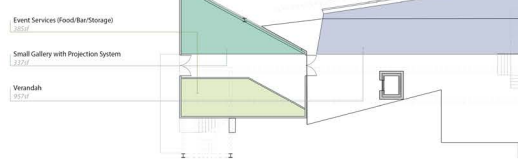
4TH LEVEL



3RD LEVEL



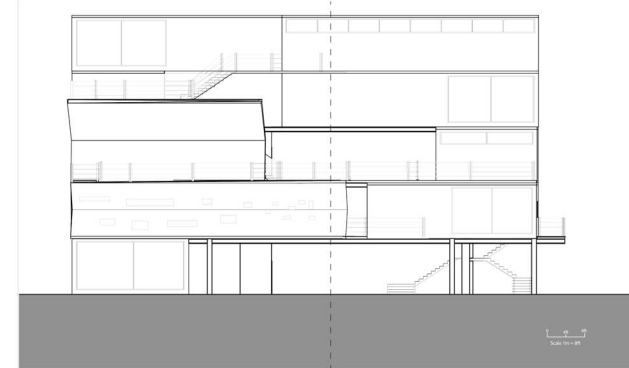
2ND LEVEL



GROUND LEVEL



NORTH ELEVATION



SECTION

